

T-Eumex 504PC SE

The Communications System with Automatic Internet
Access and Firewall Functionality.



Before You Install or Operate Your Eumex 504PC SE...



...please make sure you read the instructions in this user guide. The law requires us to inform you about important safety precautions, both for your own safety and to avoid damage to your equipment.

If you ignore this guide, Deutsche Telekom will not accept any liability for damages resulting from negligent or wilful disregard of the instructions contained in it.

Only equipment supplying safety extra low voltage (SELV) and/or complying with standard ETS 300 047 should be connected to the Eumex 504PC SE. Equipment operated in accordance with its purpose complies with this regulation.

Do not open the housing yourself. Unauthorised opening of the housing and improper repairs may endanger the user. In addition, the warranty will be invalidated.

Do not allow fluids to penetrate inside the Eumex 504PC SE, as this could result in short circuits or electric shocks.

Please commission your Eumex 504PC SE as described in the section on Mounting and Commissioning.

Symbols Used



General note



Important safety precautions



Lift the handset



Replace the handset



Hold your conversation



Dial telephone number or select code digit



You hear an acknowledgement tone



Your telephone rings



3-party conference



Press the R-key (aka the flash or enquiry key)



Use the star key to activate or deactivate a feature



Use the hash key to quit programming



Dial specific digits.

Contents

General	1
A Word of Welcome	1
The Features of the Eumex 504PC SE	2
Supported ISDN Features	3
Safety Precautions	4
Power Failure	4
Mounting and Commissioning	5
Scope of Delivery	5
What Does the Eumex 504PC SE Require?	6
Mounting and Installation Sequence	7
Mounting Location	8
Choosing a Location for Your Eumex 504PC SE	9
Tools for Wall Mounting	9
Wall Mounting	9
Connecting Devices	10
Connection Diagram	10
Connecting	10
Connecting the Eumex 504PC SE to T-ISDN	11
Connecting Analogue Terminals to the Eumex 504PC SE	12
Connecting a Computer to the Eumex 504PC SE	12
Connecting the Eumex 504PC SE to the Power Supply	13
Additional Terminals on the S ₀ Bus	15
Interpreting the LEDs	16
Setting the Dialling Mode for the Analogue Terminals	16
Commissioning	17
The Eumex 504PC SE Default Settings on Delivery	17
Telephoning	18
Accepting Calls	18
Automatic and Manual External Line Seizure	18
Making Internal Calls	19
Making External Calls	20
Making Calls Using Speed Dialling	21
Enquiry Calls	22
Transferring Calls (ECT) without an Announcement	23
Transferring Calls (ECT) with an Announcement	24
Speaking with Two Subscribers Alternately (Toggling)	25
Speaking with Two Subscribers Simultaneously (3-party Conference)	26
Picking up Calls	27
Picking up Calls from an Answerphone	27
Automatic Callback on Busy	27
Automatic Callback on No Reply	28
DTMF Post-dialling	29

Contents

Malicious Call Identification (MCID).....	29
Calling Your T-NetBox.....	29
Staying in Touch	30
Call Forwarding	30
Activating Call Forwarding.....	30
Deactivating Call Forwarding	31
Accepting or Rejecting Call Waiting.....	32
Activating Call-waiting Protection	33
Deactivating Call-waiting Protection	33
Day/Night Line Switchover	34
Special Settings/Features.....	35
Blacklist.....	35
Call Through.....	36
Using Call Through	36
External Access Rights and Speed-dialling Numbers	37
Emergency Numbers.....	38
Charge Limit (Charge Account)	38
Call Data.....	38
Configuration via Telephone	39
Starting the Configuration Mode	40
Exiting the Configuration Mode	40
Editing the PIN	41
Storing Telephone Numbers (MSNs)	42
Call Assignment.....	43
Manual External Line Seizure with 0	45
Automatic External Line Seizure	45
Number Busy	46
Activating Number Busy.....	46
Deactivating Number Busy	46
Configuring the Device Type for the Internal Lines.....	47
External Line Access.....	48
Storing Emergency Numbers	49
Deleting Emergency Numbers.....	49
Storing Numbers for Speed Dialling	50
Deleting Individual/All Speed-dialling Number Memory Locations	50
Blocking/Releasing Speed Dialling for Internal Lines without External Line Access.....	51
Programming a Telephone Number (MSN) for Transmission	52
Always Call Anonymously (Restrict Telephone Number).....	52
Always Transmit Telephone Number (Restrict Telephone Number: Cancel)	53
Charge per Unit of Time	54
Resetting/Deleting the Charge Counter.....	54
Setting a Charge Limit	55

Contents

Activating/Deactivating the Charge Limit	55
Managing Call Forwarding	56
Activating Call Forwarding in the Exchange	56
Activating Call Forwarding in the Eumex 504PC SE	56
Deleting All Call Forwarding	57
Activating/Deactivating Call Data Recording	57
Activating/Deactivating Call Transfer (ECT).....	58
Call Transfer in a Communications system	58
Activating/Deactivating T-NetBox Signalling	59
Activating /Deactivating Automatic Keypad Signalling.....	60
Resetting the Communications system	61
Restoring the Default System Settings.....	61
Remote Configuration.....	62
Remote Configuration	62
The PC Software	63
General	63
System Prerequisites.....	64
About the Software.....	65
Installing the Software	66
Installing the Software	66
Configuring the System.....	68
Configuring the Eumex 504PC SE	68
Menu: ISDN Telephone Numbers.....	69
Menu: Internal Lines	70
Menu: Call Assignment (Day/Night Line Switchover)	71
Menu: Call Forwarding	72
Menu: Speed Dialling	74
Menu: Security – Filter Settings	75
Menu: Network Settings	77
Menu: Additional Features	78
Menu: Charges – Summary.....	80
Menu: Charges – Call Data Records.....	81
Menu: Saving/Loading	82
Connecting to and Disconnecting from the Internet	83
Connecting to the Internet	83
Disconnecting from the Internet	84

Contents

Starting a Program from the Windows Taskbar	85
Starting a Program from the Windows Taskbar	85
CAPI Control.....	86
CAPI Control.....	86
FlashLoad	88
FlashLoad (Updating the Communications System Software).....	88
Teledat RVS-COM	91
Basic Functions	91
Program Modules.....	91
Dialling Wizard Software.....	93
Win-Suite – Dialling Wizard – User Interface	93
Win-Suite – Dialling Wizard – Settings.....	94
Call List	95
Win-Suite – Displaying the Call List	95
Win-Suite – Call List – Dialling from the Call List	96
Appendix.....	97
Audio Signals / Ringer Cadences	97
Technical Specifications	98
Dealing with Faults	99
Customer Service.....	100
Glossary.....	101
Declaration of Conformity.....	107
Returning Old Communications Systems.....	107
Returning Your Old CD-ROM	107
Warranty.....	107
Index of Key Words	109

General

A Word of Welcome

The Eumex 504PC SE is an ISDN communications system enabling you to connect up to four analogue devices to a basic ISDN connection.

In addition, the Eumex 504PC SE, in conjunction with the Teledat RVS-COM software supplied and a PC with a USB or V.24 interface, enables you to use data applications such as ISDN data transfer, transmission and reception of class 3 faxes, a mailbox terminal, answerphone functions and T-Online services.

Two completely separate external calls (e.g. a telephone call and a data application) can take place simultaneously on the two B-channels of an ISDN line. For example, you can have a telephone conversation while the connected PC is being used to surf the Internet.

The Eumex 504PC SE complies with the statutory regulations for telecommunications equipment. You are permitted to mount and install it yourself.

The Eumex 504PC SE should only be operated on an ISDN multi-terminal connection. It complies with the DSS 1 protocol. The Eumex 504PC SE is not designed for use on dedicated ISDN connections (system connection).

You can operate analogue devices with either dual tone multi-frequency (DTMF) dialling and a flash function or with pulse dialling on the Eumex 504PC SE.

A caller's telephone number will only be displayed on telephones supporting this feature.

Please note: You require telephones with DTMF dialling and a flash function in order to be able to use the full range of Eumex 504PC SE features. Telephones with pulse dialling support neither the flash function (e.g. for enquiry calls) nor the star and hash keys for the control of features.

The Features of the Eumex 504PC SE

- 10 multiple subscriber numbers (MSNs)
- Call waiting/call-waiting protection
- Call list for 50 calls (can be read on a PC)
- Call forwarding ("Immediately," "On busy," "After a (specified) time")
- Automatic callback ("On no reply" or "On busy")
- Call through to route incoming calls to external destinations
- CLIP (calling line number presentation) on analogue telephones
- Supports Doorline M06
- Dynamic B-channel handling
- Five levels of external line access
- Manual/automatic external line seizure
- Fax filter (blacklist for undesired fax reception)
- Internal/external call transfer
- Call transfer in a communications system (operation as a secondary system)
- Selective seizure of outgoing MSNs
- Call pick-up / pick-up from an answerphone
- Internet filter and/or blacklist for undesired Internet access and/or calls
- Port for connecting multi-purpose terminals
- Configuration via PC (Web Configurator and Windows user interface)
- Configuration via telephone
- Speed-dialling using speed-dialling codes or vanity function (name dialling)
- DTMF post-dialling
- Programmable emergency numbers (can always be dialled)
- Network adapter and firewall functionality for fast Internet access
- Enquiry calls / toggling
- USB and serial interface (V.24) to PC
- Supports SMS in wired network (corresponding telephone required)
- Saves up to 50 call data records / call data recording
- Day/night line switchover automatically switches over call assignment

Supported ISDN Features

- Call waiting / reject call waiting / accept call waiting with subsequent toggling
- Internal/external call forwarding ("Immediately," "On busy," "After a (specified) time")
- Presentation of the calling line number to the called line (CLIP)
- Transmission of the calling line number is restricted (CLIR)
- Presentation of the called line number to the calling line (COLP)
- Transmission of the called line number is restricted (COLR)
- 3-party conference (two simultaneous 3-party conferences are possible)
- Malicious call identification (MCID)
- Holding (internal and external)
- Messages waiting in the T-NetBox are signalled visually (MWI)
- Toggling (internal and external)
- Multiple subscriber numbers (MSN, on a multi-terminal connection)
- MSN busy (busy on busy)
- Enquiry calls (internal and external)
- Automatic callback on busy (CCBS)
- Automatic callback on no reply (CCNR)
- Call forwarding by called party (CD)
- Advice of charge (AOCD/AOCE)
- Explicit call forwarding/transfer (ECT)

Please note:

Certain features must first be ordered from your telephone network provider before you can use them.

Safety Precautions

Do not open the housing. Unauthorised opening of the housing and improper repairs can endanger the user. In addition, the warranty is invalidated.

Do not continue using damaged or defective plugs or AC adapters with defective housings as these could cause electric shocks. Replace these components immediately with spare parts made by the same manufacturer.

Only equipment supplying safety extra low voltage (SELV) and/or complying with standard ETS 300 047 may be connected to the Eumex 504PC SE. Equipment operated in accordance with its purpose complies with this regulation.

Do not allow fluids to penetrate inside the Eumex 504PC SE, as this could result in short circuits or electric shocks.

Do not install the Eumex 504PC SE during a thunderstorm, or attach or remove cables, as this could lead to an electric shock.

The Eumex 504PC SE is designed for indoor operation only. Lay the cables so that they cannot be walked on or tripped over.



Do not connect any devices that use the a/b lines for earthing to the analogue ports (TAE sockets, plug-in terminals). The a/b lines must not be connected to earth, as this could damage the device.

When connecting lines to the analogue ports, you must ensure that any existing shielding is not connected to earth.

Power Failure

Data backup: in the case of a power failure, all the data in the memory (program and user data) is retained without any changes. Merely the date and time are reset to their default settings when power is restored. The internal clock is automatically set to the correct time when the next charged call is made.

All callbacks are deleted.

You cannot telephone during a power failure.

Mounting and Commissioning

Scope of Delivery

Check to make sure that the contents of the package are complete:

- 1 Eumex 504PC SE ISDN communications system
- 1 plug-in AC adapter
- 1 ISDN connector cable
- 1 USB connector cable for PC
- 1 CD-ROM with Windows 98/Me/2000/XP* installation software
- 1 Eumex 504PC SE user guide (this document)
- 4+1+1 brief user guides for analogue devices
- 1 "Quick Installation" leaflet
- 1 brief user guide entitled "Tips and Tricks"
- 1 drilling template
- 1 set of 6 mm rawlplugs and screws

Note

The special V.24 connector cable (for PCs running on Windows 95/NT4 operating systems) is not included in the delivery and is not available from Deutsche Telekom. This cable (part no. 4506.070) can be obtained from DeTeWe and must be ordered separately. Orders should be sent to fax no. 0049 30 6104 2662 or via e-mail to "ersatzteilservice@detewe.de."

On the CD-ROM you will find the following:

- The driver set-up software with the Common ISDN Application Programming Interface (CAPI), as well as CapiPort, CapiControl and the configuration software
- The complete ISDN software Teledat RVS-COM for Win 98/Me/2000/XP* for data transfer, class 3 and 4 faxes, PC telephony, answerphone function, and SMS in the wired network
- Deutsche Telekom's T-Online software

* Windows 95/NT4 are also supported. However, there is no guarantee that the complete range of functions provided will be available (as these operating systems do not support USB).

Mounting and Commissioning

What Does the Eumex 504PC SE Require?

Certain prerequisites must be met for the smooth installation and operation of the Eumex 504PC SE, the configuration software and the Teledat RVS-COM communications package:

- You must have a basic Euro-ISDN connection with a network terminator (NTBA) as supplied by Deutsche Telekom (DSS 1). The Eumex 504PC SE is not designed to be operated on any other type of connection and any attempt to do so will lead to faulty operation.
- Only equipment supplying safety extra low voltage (SELV) and/or complying with ETS 300 047 may be connected to the Eumex 504PC SE. Equipment operated in accordance with its purpose complies with this regulation.
- In order to be able to use the full range of the Eumex 504PC SE features, you should only use analogue telephones with DTMF dialling and a flash function (70 - 330 ms).

The minimum system prerequisites for the installation of the Teledat RVS-COM communications software are as follows:

- IBM-compatible PC with hard disk and CD-ROM drive
- CPU speed of 233 MHz or faster
- 64 MB RAM
- Microsoft Windows 98/Me/2000/XP*
- One free USB interface or serial port (COM port) RS 232 (V.24).

* Windows 95/NT4 are also supported. However, there is no guarantee that the complete range of functions provided will be available, as these operating systems do not support USB. Connect PCs with these operating systems via the serial interface (V.24). This interface must be equipped with a UART 16550 chip enabling a data throughput of at least 115 kb/s. PCs built in or after 1996 generally have this chip. Please refer to your PC manual or ask your dealer or the manufacturer of your PC about this. In addition, the Eumex 504PC SE must already have been installed in accordance with the diagram in the chapter entitled "Connecting Devices" on p. 10 ff.

Please note:

Before you install the Eumex 504PC SE driver software, you must first remove any existing ISDN card and uninstall any existing CAPI drivers.

Mounting and Commissioning

Mounting and Installation Sequence

The Eumex 504PC SE consists of various components. This User Guide first describes how to mount the communications system and how to connect terminals such as telephones. You can operate your equipment using the factory settings – you won't miss a single call (see Default Settings on p. 17).

However, we recommend that you configure the Eumex 504PC SE according to your personal requirements before using it for the first time. You can configure the system via a telephone, or use a convenient, menu-driven configuration program on a connected PC. You can subsequently install the communications software on your PC.

The software is easiest to install on your PC before you connect the PC to the Eumex 504PC SE (see the chapter entitled "Installing the Software," p. 66).

Please adhere to the following sequence:

1. Mount the Eumex 504PC SE and connect the devices as described in the following sections.
2. Configure the communications system. You can do this in three different ways
 - PC configuration: menu-driven configuration via a PC. In order to do this, all the drivers on the CD supplied must be installed. Please refer to the chapter entitled "Installing the Software" on p. 66 for instructions on how to do this.
 - Configuration via a telephone connected to your communications system. Please refer to the chapter entitled "Configuration via Telephone" for instructions on how to do this.
 - Remote configuration: you can have your system remotely configured by Tele-Service for a fee.
For remote configuration, call: 0180 2 55 66 55.

PC configuration:

3. Install the CAPI driver. This procedure is described in the chapter entitled "The PC Software" on p. 63 ff.
4. Install and configure the Teledat RVS-COM communications software as described in the chapter entitled "Teledat RVS-COM" on p. 91.

With regard to points 2, 3 and 4 above, please note the system prerequisites listed in the section entitled "What Does the Eumex 504PC SE Require?"

In the Appendix you will find a glossary, an index of key words, and a diagram of the Eumex 504PC SE audio signals and ringer cadences.

Mounting and Commissioning

Mounting Location

The ambient operating temperature for the Eumex 504PC SE must not be lower than +5 °C or higher than +40 °C. For this reason, do not mount the Eumex 504PC SE

- above or in front of sources of heat (e.g. radiators),
- in direct sunlight,
- behind curtains,
- in small, unventilated rooms,
- outdoors,
- on or near inflammable material.

In addition, please ensure that

- the room is dry and as free of dust as possible,
- no high-frequency equipment (e.g. transmitters, radiation-emitting devices or similar) is nearby,
- no fluid can drop onto the Eumex 504PC SE and possibly penetrate inside the device through the ventilation slits,
- in the case of wall mounting, the wall is flat and capable of bearing the load.

The following criteria should be taken into account when selecting a mounting location:

- The availability of an earthed power socket for the plug-in AC adapter nearby.
- The length of the cables supplied. Please use the cable supplied for connecting via the USB interface. The communications system complies with the USB standard, which stipulates the use of cables not exceeding 5 m. Serial cables connecting to the V.24 interface must similarly not exceed 5 m.
- The length of the cables connecting the analogue devices must not exceed 300 m.



In order to exclude any possibility of danger to life or property, the earthed power socket for the 230 V~ mains supply must be installed by a qualified electrician.

Mounting and Commissioning

Connect the Eumex 504PC SE to a separate 230 V~ mains circuit. This prevents the communications system from being affected by possible short circuits in any other household equipment.

We recommend you to install a surge protector for protection against sudden high voltages such as those sometimes occurring during thunderstorms. Consult your electrician or Deutsche Telekom for advice.

Choosing a Location for Your Eumex 504PC SE

You can simply place the Eumex 504PC SE on a solid surface, e.g. a table. Please note that under certain circumstances the rubber pads on the base of the Eumex 504PC SE can leave unseemly marks on furniture.

Tools for Wall Mounting

You will require the following tools for wall mounting:

- 6 mm masonry drill bit (the type of drill bit depends on the type of wall)
- Hammer or percussion drill
- Screwdriver (to fit the screws supplied)

Get the rawlplugs, screws and drilling template (all supplied) ready before you start mounting the device.

Wall Mounting



Make sure that there are no pipes, cables or similar objects running through the wall near the planned drill holes, as these could be damaged.

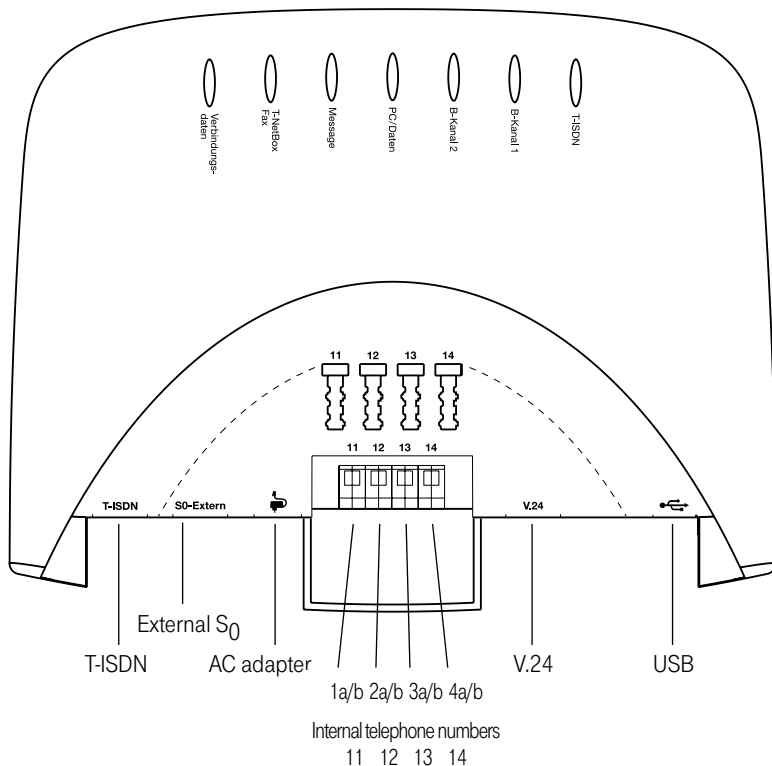
Use the drilling template supplied and a 6-mm bit to drill holes for the two mounting screws 94.4 mm apart.

Insert the wall plugs and screw the screws into the wall so that a space of 4 mm between the head of the screw and the wall remains.

Place the mounting holes in the base of the Eumex 504PC SE over the screws, and pull downwards slightly.

Connecting Devices

Connection Diagram



Connecting



Do not connect the Eumex 504PC SE during a thunderstorm, as this could lead to you getting an electric shock.



Lay all the cables so that they cannot be walked on or tripped over.

Ensure that the power and connecting cables are not bent, pulled, or in any way under mechanical pressure.

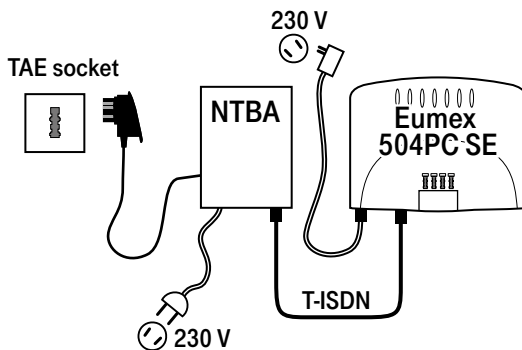
Connecting Devices

Connecting the Eumex 504PC SE to T-ISDN

Regulations permit the general public to connect the Eumex 504PC SE to the Deutsche Telekom network. You can thus connect the Eumex 504PC SE yourself if the following conditions are met:

- The device may only be connected to a basic Euro-ISDN connection. Do not under any circumstances connect it to lines or equipment in the analogue network. Never connect it to an ISDN tie line. Failure to observe these conditions can result in faulty operation or damage to the Eumex 504PC SE as well as to the network.
- The basic Euro-ISDN connection must be used in conjunction with a network terminator (NTBA) as supplied by Deutsche Telekom. The connection must be the multi-terminal type.

Insert the Eumex 504PC SE connector cable in the corresponding socket of the NTBA. Insert the other end in the socket marked "ISDN" on the bottom left-hand side of the Eumex 504PC SE.



Connecting Analogue Terminals to the Eumex 504PC SE


You can connect up to four analogue terminals to your communications system.

We recommend you to deploy terminals that feature DTMF dialling and a flash function. Terminals with pulse dialling cannot perform functions requiring the R-key (e.g. enquiry calls), or the star or hash keys (e.g. setting features). Please refer to the section entitled "Setting the Dialling Mode" on p. 16.

You can connect the analogue terminals directly to the TAE ports on the EUMEX 504PC SE, or you can run 2-wire cable to remote TAE sockets. You will find the connectors beneath the semi-circular silver-coloured cover.

The cables connecting the Eumex 504PC SE to the analogue terminals must not be longer than 300m.

Connecting a Computer to the Eumex 504PC SE

Insert a serial connector cable or the correct end of the Eumex 504PC SE USB cable in the corresponding V.24 or USB socket . Insert the other end in the corresponding socket on the PC.

You do not need a computer to operate and configure the Eumex 504PC SE. However, a PC simplifies the system programming, while the communications software includes a range of further useful applications.

The software on the CD-ROM supplied is easiest to install on your PC before you connect it to the Eumex 504PC SE.

For further details, please refer to p. 66 ff.

Connecting the Eumex 504PC SE to the Power Supply

Connection to the 230V mains supply is not dangerous, providing you adhere strictly to the following instructions.



Danger! Under no circumstances should you commission or continue operating the device if the AC adapter is damaged. Failure to observe this could result in loss of life due to an electric shock.

- Lay the AC adapter power cable so that it cannot be walked on or tripped over.
- Ensure that the power socket and AC adapter are easily accessible, so that the adapter can be removed from the socket quickly in case of danger! Removing the adapter from the socket is the only way of disconnecting the Eumex 504PC SE from the mains completely, as it does not have a power switch of its own.
- Never pull the adapter cable. If you want to disconnect the adapter from the mains, always pull out the adapter itself.
- Only use the AC adapter supplied. Use of other adapters could result in faulty operation or even electric shocks or damage to property.


If the adapter is plugged in and damaged:

- First remove the fuse for that power circuit before pulling the adapter out of the socket.
- You must not attempt to repair the AC adapter yourself. Please acquire a new one from T-Service.
- Never remove the AC adapter from the power cable supplied. Failure to observe this can result in loss of life due to an electric shock! If the power cable is too short to reach the socket, purchase a suitable extension cable from a recognised dealer.

Connecting Devices

The operation of a communications system can be impaired by interference in the power supply caused by other equipment, especially photocopiers, laser printers, electric typewriters, air conditioning, fan heaters, vacuum cleaners and refrigerators. For this reason, please:

- Connect the Eumex 504PC SE to a socket as far away as possible from sockets used for the above-mentioned equipment. The best solution is to use a separate circuit for the Eumex 504PC SE.
- Ensure that the AC adapter is always seated securely in its socket. Adapters or sockets not firmly secured can lead to faulty operation and possibly fires! Have such sources of danger repaired by qualified personnel without delay.
- Only use multiple sockets that are adequately safe. This can be assumed only if the multiple socket displays the proof of its compliance with safety standards (e.g. the CE symbol). Failure to observe this can lead to faulty operation of the Eumex 504PC SE, and even fires.

Connect the Eumex 504PC SE to the mains supply. The connector socket for the AC adapter is on the lower side of the Eumex 504PC SE. Insert the corresponding power cable plug into the socket , then insert the AC adapter into the mains power socket.

When the T-SDN LED lights up, it means that the NTBA is operational. If the LED flashes, it means that external calls are not possible.

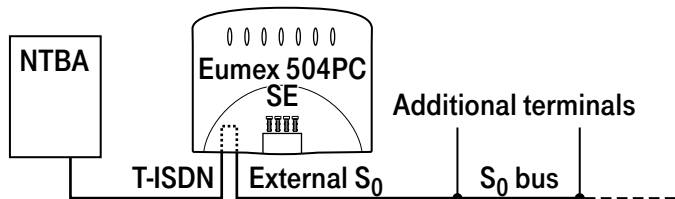
You can operate your equipment using the factory settings – you won't miss a single call (see the chapter entitled "Default Settings" on p. 17). In this setting, incoming calls are signalled simultaneously on all terminals. External calls can only be made to **specific** terminals when you have assigned them MSNs. Please refer to the chapter entitled "Configuring the System" for information on this procedure.

In the case of faulty operation, please also refer to the notes in the Appendix (p. 99).

Connecting Devices

Additional Terminals on the S₀ Bus

Besides the Eumex 504PC SE, you can operate additional ISDN terminals (e.g. ISDN telephones) on the NTBA. To simplify the connection of additional devices, you will find an external S₀ port on the lower side of the Eumex 504PC SE. This is the looped-through S₀ bus from the NTBA.



You can use the external S₀ port to connect an additional ISDN terminal or a multiple ISDN socket for more than one terminal. A fixed installation from the NTBA should only be done by a qualified electrician.

Calls between terminals connected to the looped-through NTBA S₀ bus and the analogue terminals connected to the Eumex 504PC SE are routed via the telephone exchange and are thus not internal calls.

Interpreting the LEDs

The LEDs on the upper side of the Eumex 504PC SE have the following meanings:

- **T-ISDN** is illuminated: the NTBA is operational.
- **T-ISDN** flashes: the NTBA is not operational.
- **B-channel 1** is illuminated: B-channel 1 is busy.
- **B-channel 2** is illuminated: B-channel 2 is busy.
- **PC/Data** is illuminated: either the USB or the V.24 interface to the connected PC is busy (the CAPI driver is active).
- **PC/Data** flashes: data is being transferred to the connected PC (the CAPI driver is active).
- **Message** is illuminated: there is a voice message in your T-NetBox (see also note on p. 59).
- **T-NetBox/Fax** is illuminated: there is a fax message in your T-NetBox (see also note on p. 59).
- **Call data** is illuminated: your Eumex 504PC SE has saved between 1 and 39 call data records.
- **Call data** flashes: your Eumex 504PC SE has saved between 40 and 50 call data records. Note: when 50 call data records have been saved, each new record overwrites the oldest one.
- **Call data** is not illuminated: no call data records have been saved.

Setting the Dialling Mode for the Analogue Terminals



The communications system automatically recognises analogue terminals with DTMF dialling and a flash function; you do not have to set anything.

Analogue terminals with pulse dialling must be enrolled before they can be used: pick up the handset, dial any digit other than 1, then replace the handset.

The Eumex 504PC SE Default Settings on Delivery

The following default settings and features are active on delivery:

- The PIN is set to "0000."
- External incoming calls are signalled on all connected terminals.
- External line access: all terminals have international access rights.
- When you lift the handset, you hear an external dialling tone (= automatic external line seizure).
- Your own MSN is transmitted to the called party in an external outgoing call.
- All ports are configured for telephones.
- Call-waiting protection is off.
- Call data records are not saved.
- External call transfer (ECT) is off.
- T-NetBox signalling ("Message" LED) is off.
- Charge limit (charge account) is off.
- The emergency numbers 110 and 112 are available.

We recommend you to configure the Eumex 504PC SE to meet your own requirements before using it (see the chapter entitled "Configuring the System").

You can reset the system to the default settings at any time (see the chapter entitled "Configuring the System" on p. 82 or the chapter entitled "Configuration via Telephone" on p. 61).

If desired, T-Service will remotely configure your communications system for you. Call us on 0180 2 55 66 55 (your call will incur a charge). Unfortunately we cannot configure your browser or your PC operating system for you.

Telephoning



In order for you to be able to use all the features provided by your telecommunications system, the terminals must be set to DTMF dialling with a flash function. Terminals with pulse dialling cannot perform functions requiring the R-key, the star or the hash keys.

Accepting Calls



Your telephone rings: internal or external call. Please see the table in the Appendix for the different ringer cadences.



Lift the handset.



Have your internal or external conversation.



Replace the handset to end the call.

Automatic and Manual External Line Seizure

You can configure your Eumex 504PC SE so that when you lift the handset, an external line is automatically seized, or so that you have to select the code digit 0 first to seize the line manually.



Automatic external line seizure (the default setting on delivery): when you pick up the handset, you hear the external dialling tone and can dial an external number immediately. If you want to make an internal call, you press the R-key. You then hear an internal dialling tone and can dial an internal number (11 - 14).

If the system is set to automatic external line seizure, you cannot dial internal numbers using analogue terminals with **pulse dialling**.



Manual external line seizure: when you pick up the handset, you hear an internal dialling tone and can dial an internal number immediately. If you want to make an external call, you dial 0. This seizes an external line, and you hear an external dialling tone. You can then dial an external number.

Please note: avoid using DTMF dialling (e.g. with a multi-frequency transmitter) to establish a connection on a terminal with pulse dialling. Your terminal will otherwise be blocked for further dialling and will have to be released again by dialling any digit other than 1.

Making Internal Calls

An internal call is a call made to another subscriber on the same Eumex 504PC SE. Such calls are not routed via public telephone exchanges and are thus not charged. You can establish internal connections to connected analogue terminals as well as to PCs. Calls between a PC and a fax terminal, or between a telephone and an answerphone set up on a PC are possible. The internal numbers from 20 to 29 are available for the connected PC. These numbers are assigned to the PC using the communications software. For further details, please refer to the respective software user guide.

Automatic external line seizure (the default setting on delivery):



Lift the handset. You hear an external dialling tone.



Press the R-key.



Dial the desired internal number (11 to 14 or 20 to 29).
You hear an internal call signalling: the call is signalled on the internal subscriber's device.

Manual external line seizure:



Lift the handset. You hear the internal dialling tone.



Dial the desired internal number (11 to 14 or 20 to 29).
You hear internal call signalling: the call is signalled on the internal subscriber's device.

Note:

In order to be able to contact CAPI applications (communications software) internally as well as externally, you have to assign the respective internal number (20 to 29) to the MSN programmed in the corresponding communications software. A maximum of three numbers can be assigned. You do this in the Configurator; see p. 78.

Please note the difference between automatic and manual external line seizure using the digit 0 in all dialling procedures from here on.

Making External Calls

Together with your ISDN connection, your telephone network provider also supplied you with a range of telephone numbers (so-called multiple subscriber numbers, or just "MSNs"). You use the Configurator to save and assign these MSNs. When you have saved your MSNs, you can use them for specific purposes when making external calls. The various MSNs are billed separately, which means that you can book the costs for outgoing calls separately.

External call without selective MSN seizure



Lift the handset.



In the case of automatic external line seizure (default setting on delivery):

You hear an external dialling tone. Dial the external number.



In the case of manual external line seizure:

You hear an internal dialling tone. Dial 0.

You hear an external dialling tone. Dial the external number.

External call with selective MSN seizure



Lift the handset.



In the case of automatic external line seizure (default setting on delivery):

You hear the external dialling tone. Press the R-key and select the code digit 5.



Enter the position of the MSN you want to seize for this call (1 to 0; see the chapter entitled "MSN List in the PC Configurator," p. 69).



Dial the external number.



In the case of manual external line seizure:

You hear an internal dialling tone. Select the code digit 5.



Enter the position of the MSN you want to seize for this call (1 to 0; see the chapter entitled "MSN List in the PC Configurator," p. 69).



Dial 0. You hear an external dialling tone. Dial the external number.

Making Calls Using Speed-dialling

The Eumex 504PC SE saves up to 100 speed-dialling numbers (or "destinations"). You use the PC Configurator to enter the speed-dialling destinations and to assign them speed-dialling codes or names (necessary for the vanity function).

You select a speed-dialling destination by means of a double-digit speed-dialling code (00 - 99), or by means of the vanity function. The vanity function enables you to use the letters printed on the keys instead of the digits to select a speed-dialling destination. For example, to enter the name "Jane," you would press the keys 5 (J) - 2 (A) - 6 (N) - 3 (E). Vanity numbers must be completed by pressing the hash key.

Every internal subscriber can be granted the right to use speed-dialling destinations. This can be done from the PC Configurator (see p. 70) or from a connected analogue terminal and does not depend on the subscriber's external access levels (see p. 51).

Note:

You cannot use speed-dialling during an enquiry call.

Dialling a speed-dialling number using the speed-dialling code



Lift the handset. You hear an internal or external dialling tone.



Press the R-key
(only in the case of automatic external line seizure).



Select the code digit 6.



Then select a double-digit speed-dialling code number between 00 and 99.
The corresponding telephone number will be dialled.



Conduct your conversation.

Telephoning

Speed-dialling call using the vanity function



Lift the handset. You hear an internal or external dialling tone.



Press the R-key
(only in the case of automatic external line seizure).



Select the code digit 9.



Following the letters printed on the keys, enter the name of the speed-dialling destination. Complete the entry by pressing the hash key. The corresponding number is dialled.



Have your conversation.

Enquiry Calls

You want to hold your current call in order to make an enquiry call. The subscriber who is on hold cannot hear your enquiry call. External subscribers on hold hear an announcement from the telephone exchange.



You are having a conversation with the first subscriber.



Press the R-key. You hear an internal dialling tone.



You now have the following options:

- dial an internal number,
- or**
- dial 0 and an external number, or



if you want to terminate the first call and continue speaking with the subscriber in the enquiry call, press the R-key and dial 0.



if you want to terminate the first call and continue speaking with the subscriber in the enquiry call, press the R-key and dial 0.



Replace the handset to end the call.

Transferring Calls (ECT) without an Announcement

Let's say you want to transfer a call internally or externally. Dial the internal subscriber's number or 0 and the external number, then replace the handset. The subscriber's telephone signals the call. When he lifts the handset he accepts the call.



You are having a conversation.



Press the R-key. You hear the internal dialling tone. Dial the internal number or 0 followed by the external number. The subscriber's telephone signals the call. Replace the handset.

If the called subscriber lifts the handset, he takes over the call.

If the called subscriber does not lift the handset, the number will be redialled after approximately 45 seconds. When you lift the handset, you will be reconnected with the first subscriber, i.e. the person with whom you originally spoke.

In order to transfer an external call to another external subscriber, the ISDN Explicit Call Transfer service must be active for your connection. For up-to-date details of this service, please contact your T-Punkt or Customer Service department on 0800 33 01000.



If you hear a busy tone when you have dialled the internal or external number, press the R-key again to be reconnected with the first subscriber.

Note: If you use ECT to transfer an external call to an external subscriber, this call is switched in the telephone exchange. In the case of direct-dialled calls, the call will be billed to your own account. You will also have no control over the duration of the transferred call. The ECT function can be deactivated in the configuration mode.vornehmen.

Transferring Calls (ECT) with an Announcement

You want to transfer a call internally or externally, but you first want to speak to the other subscriber.



You are having a conversation. Press the R-key. You hear the internal dialling tone. Dial the internal number or 0 followed by the external number. The subscriber's telephone signals the enquiry call. He lifts the handset.



Have your conversation. Announce the call transfer. Replace the handset to connect the two subscribers.

In order to transfer an external call to another external subscriber, the ISDN service "ECT" must be active for your connection. For up-to-date details of this service, please contact your T-Punkt or Customer Service department on 0800 33 01000.



If you hear a busy tone when you have dialled the internal or external number, press the R-key again to be reconnected with the first subscriber.

You can also transfer an internal call to an external subscriber. Please proceed as described above.

Note: If you use ECT to transfer an external call to an external subscriber, this call is switched in the exchange and (in the case of calls you dialled yourself) billed to your own account. You have no control over the duration of the transferred call. The ECT function can be deactivated in the configuration mode.

Speaking with Two Subscribers Alternately (Toggling)

Using the Eumex 504PC SE you can toggle between two subscribers, i.e. speak to them alternately. They can be internal or external subscribers. External subscribers who are on hold hear an announcement from the exchange.



You are having a conversation and want to make an enquiry call to a second subscriber.



Press the R-key.

You now have the following options:



- dial an internal number or
- dial 0 and an external number.



dial 0 and an external number.



Press the R-key and the code digit 2 to toggle between the first and the second subscriber.



When you want to terminate the call with the active subscriber, press the R-key and the code digit 1. You are then connected with the subscriber on hold.



If the currently active subscriber replaces the handset during the call, press the R-key to return to the subscriber on hold.



Continue your conversation.



Replace the handset to terminate the call.

External calls without call transfer (ECT): If you are making a call with two external subscribers and you replace the handset, the conversation with the active subscriber is terminated and you are automatically recalled by the subscriber who is on hold.

External calls with call transfer (ECT): If you are in a call with two external subscribers and you replace the handset, the two external subscribers are connected.

Telephoning

Speaking with Two Subscribers Simultaneously (3-party Conference)

Used on a multi-terminal connection the Eumex 504PC SE enables two 3-party conferences to be held simultaneously. One internal and two external subscribers can participate in a conference. One B-channel must be free in order for a conference to take place. You can initiate a conference during a call.



Lift the handset.



Dial the first external subscriber's number.



Have your external conversation.



Press the R-key for an enquiry call.



Dial 0 and the second external number.



Have your second external conversation. The first external subscriber is held.



Press the R-key and the code digit 3.



Have the conference. A subscriber admitted into the conference can replace his handset at any time. In this case, the initiating subscriber continues the conversation with the remaining subscriber.



The initiating subscriber terminates the conference by replacing the handset. This disconnects all calls

or



by pressing the R-key and the code digit 2, the last subscriber on hold (in this case the first external subscriber, see above), is held again. The conference is terminated, and you speak with the last subscriber to be admitted. You can now use R2 to toggle between the two subscribers.

Telephoning

Picking up Calls

You can pick up an external call signalled on another terminal on the Eumex 504PC SE:



Lift your handset. You hear an external dialling tone.



Press the R-key and the code digit 4.



Have your conversation.

Picking up Calls from an Answerphone

You can pick up a call from an analogue answerphone even if it has already started running. In order to do this, the analogue answerphone line must be configured to "Answerphone" (see the chapter entitled "Configuring the Device Type for the Lines" on p. 47).



Your answerphone has taken a call. Lift your handset. You hear an external dialling tone.



Press the R-key and the code digits 75.



Have your conversation.

Automatic Callback on Busy (CCBS)

If the called external subscriber is busy, you can make a callback request. As soon as the subscriber is free again, your telephone rings for 20 seconds. When you lift the handset, the previously busy subscriber's number is automatically dialled.

You have dialled an external number and you hear a busy tone:



Select the code digit 7 within 20 seconds,



or

Telephoning



press the star key, select 37, then press the hash key. On some telephones, this sequence is pre-programmed for a single key.



You hear a positive acknowledgement tone.



Replace the handset. As soon as the called subscriber is free again, you will receive the callback. When you lift the handset, the subscriber's number is dialled.

Callback requests are deleted after 45 minutes, or when they have successfully been carried out. Only one callback per subscriber is possible.

Automatic Callback on No Reply (CCNR)

If the ISDN Completion of Calls on No Reply service is available, you can also make a callback request to contact a free subscriber. The procedure is the same as for a busy subscriber.



You have dialled an external number, but the subscriber does not lift the handset.



Select the code digit 7 within 20 seconds

or



press the star key, select the code digits 37, then press the hash key. On some telephones, this sequence is pre-programmed for a single key.



You hear an acknowledgement tone.



Replace the handset. As soon as the other subscriber has used his telephone again, you receive the callback. When you lift the handset, the subscriber's number is dialled.

For the latest details of this service, please contact your T-Punkt or Customer Service department on 0800 33 01000.

DTMF Post-dialling

DTMF post-dialling is only possible during external calls when, for example, an automatic announcement prompts you to post-dial digits and symbols (1 to 0, *and #), during fax polling, during a remote answerphone enquiry, or when communicating with a voice mailbox or other application.



There is an external call. You hear e.g. the answerphone signal or an automatic announcement.



You can now post-dial.



The external call remains connected.

Malicious Call Identification (MCID)

Using this ISDN service, you can have the data of a malicious call recorded in your telephone network provider's exchange. The service must have been requested prior to use and is charged for. For further details, please contact your network provider.



You receive a call from an undesirable caller.



Press the R-key, then the hash key, and dial 0.

Calling Your T-NetBox

If you have a T-NetBox from Deutsche Telekom, saved messages or incoming faxes are signalled by the "Message" LED (see the note on p. 59). Please refer to the T-NetBox User Guide for instructions on how to retrieve information.

In order to call the T-NetBox and retrieve your messages, you must always use a telephone to which you have assigned the first MSN, because the LED signalling is always transmitted to this number (cf. the section entitled "Call Assignment" on p. 43).

Example: if you have configured your communications system so that calls to the MSN with the code digit 1 are signalled on telephones 11 and 12, you can then use both these telephones for T-NetBox enquiries.

Staying in Touch

Call Forwarding

You can forward calls from an internal to an external terminal, or from one internal to another internal terminal. Depending on the configuration, the call is forwarded in the Eumex 504PC SE or in the exchange (where a charge is incurred). In order to use internal call forwarding, the "Call forwarding in the Eumex 504PC SE" function must be activated in the configuration mode (see p. 56).

Call forwarding is configured for the connection and its MSNs. For this reason, your MSNs must be saved and assigned before you can use call forwarding (see the section entitled "Storing Telephone Numbers (MSNs)" on p. 42).

There are three types of call forwarding:

"Immediately": incoming calls are forwarded without being signalled on the terminal that was originally dialled.

"After a set time": calls are signalled first on the terminal that was dialled, and after a certain period, are forwarded to the specified destination. The period is set to approx. 20 seconds.

"On busy": if the terminal is busy, the call is forwarded to the other specified destination.

Note

If you hear a special dialling tone instead of the normal one, it means that immediate call forwarding is active in the exchange.

In the case of immediate call forwarding to the T-NetBox, the Eumex 504PC SE does not indicate a message waiting.

If "Call forwarding in the exchange" is active, internal calls cannot be forwarded.

Activating Call Forwarding



Lift the handset.



Press the R-key and the star key.



Select the code digit for the type of call forwarding you want to activate:

Staying in Touch

- **"Immediately"**: code digits 21
- **"After a set time"**: code digits 61
- **"On busy"**: code digits 67.



Press the star key.



Enter the call forwarding destination number: an internal number (only if call forwarding in the Eumex 504PC SE is active), or an external number without a leading 0 for the manual external line seizure.

Only destinations for which the subscriber has access rights are possible as call forwarding destinations.

Do not forward to the following numbers: 011, 012, 014, 018, 019, 11.



Press the hash key.



You hear a positive acknowledgement tone.



Replace the handset.

All calls for your internal number and the MSN assigned to your terminal will be forwarded.

Deactivating Call Forwarding



Lift the handset.



Press the R-key and the hash key.



Select the code digit for the type of call forwarding you want to deactivate:

- "Immediately": code digits 21
- "After a set time": code digits 61
- "On busy": code digits 67



Press the hash key again.



You hear a positive acknowledgement tone.



Replace the handset.

Accepting or Rejecting Call Waiting

You are having a conversation and an external subscriber calls. The call is signalled on your terminal by means of a call-waiting tone. Internal callers always hear a busy tone when you are having a conversation.

You have the following options:



1. You can terminate the current call by replacing the handset, and accept the call that is waiting by picking the handset up again.



2. On an analogue terminal you can reject the waiting call by pressing the R-key and the code digit 0. Your previous call remains connected.



3. You can terminate the current call and accept the waiting call by pressing the R-key and the code digit 1 (see also the section entitled "Toggling" on p. 25 in this chapter).



4. You can hold the current call by pressing the R-key and the code digit 2 to accept the waiting call (see also the section entitled "Toggling" on p. 25 in this chapter).

5. You can ignore the call-waiting tone and continue your conversation.

Activating Call-waiting Protection

If you want to have a conversation without being disturbed by any further callers, you can activate call-waiting protection for the line to which your terminal is connected. Any further callers then hear a busy tone.

Call-waiting protection remains active until it is deactivated again.



Lift the handset.



Press the R-key and the hash key.



Select the code digits 43.



Press the hash key.



You hear a positive acknowledgement tone.



Replace the handset.

Deactivating Call-waiting Protection



Lift the handset.



Press the R-key and the star key.



Select the code digits 43.



Press the hash key.



You hear a positive acknowledgement tone.



Replace the handset.

Day/Night Line Switchover

You can use the PC Configurator to program an alternative call assignment if you wish. You can then use any connected analogue terminal to switch between variant 1 (e.g. day line) and variant 2 (e.g. night line), or activate an automatic, timed switchover.

Switchover times are programmed in the PC Configurator.



Lift the handset.



Press the R-key.



Select the code digits 70 to activate variant 1 (e.g. day line).

or



the code digits 71 to activate variant 2 (e.g. night line).

or



Select the code digits 72 to activate the timed variant.

You hear a positive acknowledgement tone in confirmation.



Replace the handset.

Special Settings/Features

Blacklist

You can program a common blacklist for all connected analogue terminals. This blacklist contains up to five telephone numbers or parts of telephone numbers. The blacklist is programmed in the PC Configurator.

With the help of this blacklist, you can, for example, prevent calls being made to sex numbers. If an attempt is made to dial a number contained in the blacklist, a negative acknowledgement tone is heard as soon as the number is recognised as one contained in the list.

Switching the blacklist on



Lift the handset.



Press the R-key, select the code digit 8, then press the star key.



Enter your PIN.



Press the star key, and select the code digits 74.



Press the hash key, select the code digit 8, then press the hash key again. You hear a positive acknowledgement tone.



Replace the handset.

Switching the blacklist off



Lift the handset.



Press the R-key, select the code digit 8, then press the star key.



Enter your PIN.



Press the hash key and select the code digits 74.



Press the hash key, select the code digit 8, then press the hash key again. You hear a positive acknowledgement tone.



Replace the handset.

Note: the above procedure assumes that the configuration mode has not been started.

Special Settings/Features

Call Through

The call through feature enables you to use your wireless services provider's special rates (e.g. BestFriend) by specifying a certain MSN. This number is available exclusively for the relaying of calls via the second B-channel of your ISDN connection, and cannot be used for further call distribution. The selected MSN is specified in the PC Configurator.

Activating call through



Lift the handset.



Press the R-key, select the code digit 8, then press the star key.



Enter your PIN.



Press the star key and select the code digits 73.



Press the hash key, select the code digit 8, then press the hash key again. You hear a positive acknowledgement tone.



Replace the handset.

Deactivating call through



Lift the handset.



Press the R-key, select the code digit 8, then press the star key.



Enter your PIN.



Press the hash key and select the code digits 73.



Press the hash key, select the code digit 8, then press the hash key again. You hear a positive acknowledgement tone.



Replace the handset.

Note: the above procedure assumes that the configuration mode has not been started.

Using Call Through



Make a call from a terminal **not connected** to your Eumex 504PC SE to the MSN selected for this purpose. You hear an external dialling tone.



Enter the Eumex 504PC SE PIN. If the wrong PIN is entered, your call will be disconnected.



Now dial the desired number. The connection is established on the second B-channel.

Note: you require a DTMF-capable terminal to use the call-through feature.

External Line Access and Speed-dialling Numbers

If you have reduced an internal subscriber's external line access level in the configuration mode, the subscriber concerned can still call all destinations in the speed-dialling memory locations as long as speed dialling is active. This is also valid for destinations outside the specified access levels (see the chapter entitled "Blocking/Releasing Speed-dialling for Internal Lines without External Access" on p. 51 or "Menu: Internal Lines" in the chapter entitled "Configuring the System" on p. 70).

Special Settings/Features

Emergency Numbers

In the configuration mode you can set up three emergency numbers that can be dialled at any time, independent of a telephone's external line access rights. You can also use the emergency number memory to save an area code. Telephones without external line access can thus be used to call numbers in this area, while all other external calls remain blocked.

Charge Limit (Charge Account)

In the configuration mode you can assign every internal subscriber a charge limit (charge account). When the amount set is reached during a call, the call will either be disconnected (if advice of charge during the call is active) or completed (if advice of charge at the end of the call is active). Further external calls are then no longer possible. If you attempt to dial an external number, you hear a busy tone. The three emergency numbers programmed can still be dialled after the charge limit has been reached.

Call Data

Your Eumex 504PC SE saves up to 50 call data records, which you can view or print out using a PC and a printer. Data recording is signalled by means of an LED on the Eumex 504PC SE housing (see the section entitled "Interpreting the LEDs" on p. 16). When 50 data records have been saved, each new record overwrites the oldest entry. The following data is recorded:

- Internal number
- Date/time, start and finish
- Charge amount
- Number (MSN), outgoing
- Dialed number



Note: For technical reasons it is not always possible to transmit all charge information from the exchange. Discounts, special rates and premium services can lead to discrepancies between the data saved in the communications system and the telephone bill. Please refer to Deutsche Telekom's terms of business for the conditions applying to the transmission of charge information.

Deutsche Telekom's itemised telephone bill provides a detailed overview of your charges. To order this type of billing, please call our freephone number 0800 33 0 1000.

Configuration via Telephone

You can edit the presettings and configure the Eumex 504PC SE according to your personal requirements. There are three ways of doing this: you can use a PC and menus (see the chapter entitled "Configuring the System" on p. 68), a connected telephone (only possible with DTMF telephones), or the remote TeleService (0180 2 55 66 55).

Please see the chapter entitled "Remote Configuration" on p. 62.

To configure the system using a telephone, please proceed as follows:

- Start the configuration mode with your PIN (default setting is 0000).
- The configuration procedures can be carried out one after the other. When you have completed one procedure, usually by pressing the hash key, you simply continue selecting the code digits for the next procedure.
- If you hear a negative acknowledgement tone, it means that the procedure has been aborted and your input has not been saved. Start the procedure again and make your input. When you hear a positive acknowledgement tone, this means that your input has been saved.
- Exit the configuration mode. If you do not exit the configuration mode manually, this will be done automatically four minutes after the last input.

As long as the configuration mode is active, call protection is automatically activated on the telephone used, which means that you cannot be called.

When you lift the handset in the configuration mode, you always hear a special internal dialling tone.

If you attempt to configure the Eumex 504PC SE via a telephone while it is already being configured via another telephone or a PC, you will hear a busy tone.

Configuration via Telephone

Starting the Configuration Mode

To start the configuration mode:



Lift the handset.



Press the R-key
(only in the case of automatic external line access).

You hear an internal dialling tone.



Select the code digit 8.



Press the star key.



Enter your PIN (the default setting on delivery is 0000).



Press the hash key. You hear a positive acknowledgement tone.



Replace the handset. The configuration mode is now active.

When you lift the handset, you hear a special internal dialling tone. You can now edit your settings.

Exiting the Configuration Mode



Lift the handset. The configuration mode is active and you hear a special internal dialling tone.



Select the code digit 8.



Press the hash key. You hear a positive acknowledgement tone.



Replace the handset.

If you do not exit the configuration mode manually, this will be done automatically four minutes after the last input.

Configuration via Telephone

Editing the PIN

You require a personal identification number (PIN) to start the configuration mode. The default setting on delivery is 0000. We recommend you to change this PIN and keep the new one in a safe and secret place.

To edit the PIN:



Lift the handset. The configuration mode is active and you hear a special internal dialling tone.



Select the code digits 902.



Enter the old four-digit PIN (the default setting on delivery is 0000).



Press the star key.



Enter the new four-digit PIN.



Press the star key.



Enter the new four-digit PIN again.



Press the hash key. You hear a positive acknowledgement tone.



Replace the handset.

If you forget your PIN, you can only change it with the help of TeleService. The hotline number is 0180 2 55 66 55 (please note that your call will incur a charge).

Configuration via Telephone

Storing Telephone Numbers (MSNs)

In order for incoming calls to be signalled on specific terminals, you have to save the MSNs allocated to you by Deutsche Telekom in the Eumex 504PC SE. The MSNs are saved without an area code. Please make a note of the saved MSNs in the table on p. 43.



Lift the handset. The configuration mode is active and you hear a special internal dialling tone.



Select the code digits 02.



Select the code digit 1 for the first number (2 – 9 for the second to ninth numbers or 0 for the tenth). These code digits are required for call assignment (see the table on p. 43).



Enter the first MSN, without an area code.



Press the hash key. You hear a positive acknowledgement tone.



Replace the handset.

Save all further MSNs (up to ten are available) in the same way.

If you want to delete a specific MSN, enter the code digit without an MSN and confirm your entry with the hash key. Any MSN assigned to this code digit is then deleted.

It is a good idea to keep a list of all the code digits and their assigned MSNs, because you will need these code digits again for other procedures, e.g. call assignment.

Configuration via Telephone

Call Assignment

In order for incoming calls to be signalled on specific terminals, you have to program call assignment. Here you specify which terminal rings when a certain MSN is called. You do this by assigning every external number (MSN) to one or more internal lines, which then signal the call.

Please make a note of your call assignment in the table below. The call assignment in this table is programmed via an analogue telephone and is variant 1 (e.g. day line). Please use the PC Configurator if you want to program variant 2 (e.g. night line).

Variant 1 (e.g. day line)

Code digit for MSN:	Calls for MSN:	Signalled on telephone:			
		11	12	13	14
1					
2					
3					
4					
5					
6					
7					
8					
9					
0					

Variant 2 (e.g. night line)

Code digit for MSN:	Calls for MSN:	Signalled on telephone:			
		11	12	13	14
1					
2					
3					
4					
5					
6					
7					
8					
9					
0					

Configuration via Telephone

Programming variant 1 (e.g. day line):



Lift the handset. The configuration mode is active and you hear a special internal dialling tone.



Select the code digits 03.



Select the code digit (1 to 9 or 0) to which the MSN is assigned.



Enter the internal number (11 - 14) on which a call to this MSN is to be signalled.



If you want to assign additional internal numbers, press the star key each time (you hear the positive acknowledgement tone), and enter the additional internal numbers (max. four).



Press the hash key. You hear a positive acknowledgement tone.



Replace the handset.

Resetting variant 1 (e.g. day line):



Lift the handset. The configuration mode is active and you hear a special internal dialling tone.



Select the code digits 905.



Press the hash key. You hear a positive acknowledgement tone.



Replace the handset.

Incoming external calls are signalled on all telephones as your call assignment has been deleted, i.e. call assignment has been reset to the default setting on delivery.

Note: Please use the PC Configurator if you want to program variant 2 (e.g. night line).

Configuration via Telephone

Manual External Line Seizure with 0

When this setting is active, you have to dial 0 before dialling an external number.



Lift the handset. The configuration mode is active and you hear a special internal dialling tone.



Select the code digits 050.



Press the hash key. You hear a positive acknowledgement tone.



Replace the handset.

You now have to dial 0 before dialling an external number.

Automatic External Line Seizure

This is the default setting, which enables you to dial an external number immediately. Please note that when this setting is active, it is not possible to dial internal numbers using telephones with pulse dialling.



Lift the handset. The configuration mode is active and you hear a special internal dialling tone.



Select the code digits 051.



Press the hash key. You hear a positive acknowledgement tone.



Replace the handset.

Configuration via Telephone

Number Busy

With this setting you can specify whether incoming calls for an MSN during an external call are signalled as call waiting by ringing on other telephones, or whether the caller hears a busy tone.

Activating "Number Busy"

If you want the second caller to hear a busy tone when the MSN is busy, you activate the "number busy" feature:



Lift the handset. The configuration mode is active and you hear a special internal dialling tone.



Select the code digits 061.



Press the hash key. You hear a positive acknowledgement tone.



Replace the handset. Second calls for busy MSNs are not signalled.

Deactivating "Number Busy"



Lift the handset. The configuration mode is active and you hear a special internal dialling tone.



Select the code digits 060.



Press the hash key. You hear a positive acknowledgement tone.



Replace the handset.

A second call is signalled as call waiting or by ringing on other telephones.

Configuration via Telephone

Configuring the Device Type for the Internal Lines

You can configure a device type (e.g. fax, answerphone) for every internal line so that the Eumex 504PC SE can manage the respective devices correctly. This ensures that fax transmissions are not interrupted by call-waiting tones, for instance.

You configure the device types for the internal lines as follows:



Lift the handset. The configuration mode is active and you hear a special internal dialling tone.



Select the code digits for the device type:

- 10 for a telephone
- 11 for an answerphone
- 12 for Class 2/3 fax machines
- 13 for a data modem
- 14 for a multi-purpose terminal
- 15 for a Doorline M06 (doorphone)



Select the internal line number (11 - 14).



Press the hash key. You hear a positive acknowledgement tone.



Replace the handset.

Repeat the above procedure for the other lines.

Note: To ensure that your fax machine can receive all faxes, select the device type 14, "multi-purpose terminal," for the corresponding line.

Configuration via Telephone

External Line Access

You can set external line access to one of five levels for every internal line. If a subscriber dials an external number for which that line has no access rights, he hears the busy tone. The emergency numbers can always be dialled (see the section below).

You set external line access as follows:



Lift the handset. The configuration mode is active and you hear a special internal dialling tone.



Select the code digits for external line access:

Access:	Code digit:	Meaning:
International	21	All numbers can be dialled without restrictions
National	22	International access code 00 is blocked
Local access	24	Codes 0 and 00 are blocked
Outward restricted	25	Outgoing external calls are blocked, whereas incoming calls are schränkung erlaubtunrestricted
None (internal only)	26	Only internal calls are permitted, but external calls can be transferred from other subscribers.



Select the internal line number (11 - 14).



Press the hash key. You hear a positive acknowledgement tone.



Replace the handset.

Repeat the above procedure for the other internal lines.

Configuration via Telephone

Storing Emergency Numbers

Your Eumex 504PC SE can save up to three emergency numbers. These numbers can always be dialled from every telephone, independent of the external line access rights that otherwise exist.

You save the emergency numbers as follows:



Lift the handset. The configuration mode is active and you hear a special internal dialling tone.



Select the code digits 62.



Enter the number of the memory location (01, 02 or 03), and press the star key.



Enter the emergency number (up to 24 digits are possible) and press the hash key. You hear a positive acknowledgement tone.



Replace the handset.

Repeat the above procedure for each emergency number. Please refer to the note in the chapter entitled "Special Settings/Features" on p. 38.

Note: You can set up three emergency numbers (110 and 112 are preset), which can always be dialled from a telephone, independent of any external line access rights that may exist. You can also use the emergency number memory to save an area code. Telephones without external line access can thus be used to call numbers in this area, while all other external calls remain blocked.

Deleting Emergency Numbers

You delete emergency numbers as follows:



Lift the handset. The configuration mode is active and you hear a special internal dialling tone.



Select the code digits 63.



Enter the memory location you want to delete (01, 02 or 03), and press the hash key. You hear a positive acknowledgement tone.



Replace the handset.

Configuration via Telephone

Storing Numbers for Speed Dialling

Your Eumex 504PC SE can save up to 100 telephone numbers, which you can then dial conveniently using the speed-dialling code digits 00 to 99.



Lift the handset. The configuration mode is active and you hear a special internal dialling tone.



Select the code digits 61.



Select a double-digit memory location number from 00 to 99 (= speed-dialling code).



Enter the telephone number (up to 24 digits are possible). Do not enter a leading 0, even in the case of manual external line access seizure.



Press the R-key. You hear a positive acknowledgement tone.



Replace the handset.

Repeat the above procedure for every telephone number/speed-dialling code.

Tip: You can also save all procedures containing the star and hash keys as "telephone numbers." You can thus save the entire call transfer procedure (see p. 30) as a speed-dialling telephone number, and then activate or deactivate it by means of the double-digit speed-dialling code.

Deleting Individual/All Speed-dialling Numbers



Lift the handset. The configuration mode is active and you hear a special internal dialling tone.



Select the code digits 60.



Enter the memory location (i.e. the speed-dialling code, 00 to 99) of the number to be deleted. If you want to delete all speed-dialling numbers, press the star key twice instead of the memory location.



Press the hash key. You hear a positive acknowledgement tone.



Replace the handset.

Configuration via Telephone

Blocking/Releasing Speed Dialling for Internal Lines without External Line Access

Internal lines with outward restricted or no external line access can (in the default setting) can still use speed-dialling numbers to dial destinations falling outside their external line access levels. If you want to prevent this, you can block speed dialling as follows:



Lift the handset. The configuration mode is active and you hear a special internal dialling tone.



Select the code digits 27 **to block** speed dialling



or the code digits 28 **to release** speed dialling again.



Select the number of the internal line (11 - 14) you want to block or release.



Press the hash key. You hear a positive acknowledgement tone.



Replace the handset.

Configuration via Telephone

Programming a Telephone Number (MSN) for Transmission

You can program which of the MSNs is to be transmitted to the called subscriber. If you do not program anything, the first MSN for which your telephone signals calls is transmitted (see the chapter entitled "Call Assignment"). You must program this setting for each internal number (11 - 14) individually. Correct internal call data recording is only possible when the MSNs are programmed for transmission.



Lift the handset. The configuration mode is active and you hear a special internal dialling tone.



Select the code digits 04.



Select the code digit for the telephone number (MSN) (see the chapter entitled "Storing Telephone Numbers" on p. 42).



Select your internal line number (11 - 14).



Press the hash key. You hear a positive acknowledgement tone.



Replace the handset.

Always Call Anonymously (Restrict Telephone Number)

If this service has been ordered from Deutsche Telekom, you can prevent your telephone number (MSN) from being shown on the telephone of the external subscriber you have called. You must program this setting for each internal number (11 - 14) individually.

You restrict the display of your telephone number (MSN) for individual internal lines as follows:



Lift the handset. The configuration mode is active and you hear a special internal dialling tone.



Select the code digits 30.



Select the internal line number (11 - 14).



Press the hash key. You hear a positive acknowledgement tone.



Replace the handset.

Configuration via Telephone

Always Transmit Number (Restrict Telephone Number: Cancel)

You can only cancel the restriction of the telephone number display for all lines simultaneously:



Lift the handset. The configuration mode is active and you hear a special internal dialling tone.



Select the code digits 31.



Press the hash key. You hear a positive acknowledgement tone.



Replace the handset.

Your telephone numbers (MSNs) are now displayed on the external subscriber's phone again.

Configuration via Telephone

Charge per Unit of Time

Enter the charge per unit of time for call-charge registration in cents, e.g. 0006 (the default setting is 0.06 euros). You can edit the currency under "CAPI-Control\Einstellungen (Settings)\Gebühreneinstellungen (Charge settings)\Währung (Currency)."



Lift the handset. The configuration mode is active and you hear a special internal dialling tone.



Select the code digits 41.



Always enter a four-digit number. Add leading zeros if necessary.



Press the hash key. You hear a positive acknowledgement tone.



Replace the handset.

Resetting/Deleting the Charge Counter



Lift the handset. The configuration mode is active and you hear a special internal dialling tone.



Select the code digits 904.



Press the hash key. You hear a positive acknowledgement tone.



Replace the handset.

Configuration via Telephone

Setting a Charge Limit

You can set a charge limit (charge account) for every internal line, which you can then activate and deactivate as the need arises. When the limit has been reached, no further outgoing external calls are possible on this line (the subscriber hears a busy tone). The pre-programmed emergency numbers can still be dialled, however.



Lift the handset. The configuration mode is active and you hear a special internal dialling tone.



Select the code digits 44.



Select the number of the internal line (11 - 14) for which you want to limit the charge, and press the star key.



Enter the charge limit (always enter four digits, two for the euros, two for the cents, e.g. "1050" for 10.50 euros), and press the hash key. You hear a positive acknowledgement tone.



Replace the handset.

Activating/Deactivating the Charge Limit



Lift the handset. The configuration mode is active and you hear a special internal dialling tone.



Select the code digits 42 to **activate**

or



the code digits 43 to **deactivate** the charge limit.



Select the number of the internal line (11 - 14) and press the hash key. You hear a positive acknowledgement tone.



Replace the handset.

Configuration via Telephone

Managing Call Forwarding

You can specify whether call forwarding for external calls is to take place in the Eumex 504PC SE (= the default setting) or in the telephone exchange. Both procedures have certain advantages. Call forwarding in the exchange must be ordered from Deutsche Telekom.

Call forwarding in the exchange forwards the MSN assigned to the telephone that activated call forwarding.

Call forwarding in the Eumex 504PC SE seizes both B-channels simultaneously, i.e. no further external calls are possible while the call is being forwarded.

Activating Call Forwarding in the Exchange



Lift the handset. The configuration mode is active and you hear a special internal dialling tone.



Select the code digits 71.



Press the hash key. You hear a positive acknowledgement tone.



Replace the handset.

Activating Call Forwarding in the Eumex 504PC SE



Lift the handset. The configuration mode is active and you hear a special internal dialling tone.



Select the code digits 70.



Press the hash key. You hear a positive acknowledgement tone.



Replace the handset.

Configuration via Telephone

Deleting All Call Forwarding

You can use the following procedure to delete all call forwarding set in "Call forwarding in the Eumex 504PC SE":



Lift the handset. The configuration mode is active and you hear a special internal dialling tone.



Select the code digits 906.



Press the hash key. You hear a positive acknowledgement tone.



Replace the handset.

Activating/Deactivating Call Data Recording

You can activate and deactivate the recording of your outgoing call data (up to 50 call data records are possible):



Lift the handset. The configuration mode is active and you hear a special internal dialling tone.



Select the code digits 72 to activate

or



the code digits 73 to deactivate call data recording.



Press the hash key. You hear a positive acknowledgement tone.



Replace the handset.

Configuration via Telephone

Activating/Deactivating Call Transfer (ECT)

If the ISDN service ECT is available in the exchange, you can activate and deactivate it as required:



Lift the handset. The configuration mode is active and you hear a special internal dialling tone.

9 9 0

Select the code digits 990.

7 1

Select the code digits 71 to **activate**

or

7 0

the code digits 70 to **deactivate** ECT.



Press the hash key. You hear a positive acknowledgement tone.



Replace the handset.

Call Transfer in a Communications System

If your Eumex 504PC SE is installed as a secondary system behind another communications system, it may be necessary (depending on the type of primary system) to edit the following setting in order to transfer calls in the primary system:



Lift the handset. The configuration mode is active and you hear a special internal dialling tone.

9 9 0

Select the code digits 990.

8 1

Select the code digits 81 to activate

or

8 0

the code digits 80 to deactivate call transfer in the primary communications system.



Press the hash key. You hear a positive acknowledgement tone.



Replace the handset.

Configuration via Telephone

Activating/Deactivating T-NetBox Signalling

You can activate and deactivate the LED ("Message" LED) that signals messages waiting and faxes received:



Lift the handset. The configuration mode is active and you hear a special internal dialling tone.



Select the code digits 990.



Select the code digits 51 to **activate**

or



the code digits 50 to **deactivate** signalling.



Press the hash key. You hear a positive acknowledgement tone.



Replace the handset.

Note:

Messages waiting in your T-NetBox can only be signalled at the first MSN configured in your Eumex 504PC SE.

Please note:

In order to signal messages waiting in your T-NetBox, the ISDN service "MWI" must be available via your ISDN connection.

For the latest details of this service, please contact your T-Punkt or Customer Service department on 0800 33 01000.

Activating/Deactivating Automatic Keypad Signalling

If your Eumex 504PC SE is installed as a secondary system behind another communications system, it may be necessary (depending on the type of primary system) to change the signalling procedure of the Eumex 504PC SE from "Keypad" (the default setting on delivery) to "Number." This deactivates the automatic switchover to keypad triggered by pressing the star or hash keys. The star and hash keys can then also be used for dialling. Please refer to the documentation of your primary system for information on the signalling procedure required.

Deactivating automatic keypad signalling



Lift the handset. The configuration mode is active and you hear a special internal dialling tone.



Press the star key and select the code digits 75.



Press the hash key. You hear a positive acknowledgement tone.



Replace the handset.

Activating automatic keypad signalling



Lift the handset. The configuration mode is active and you hear a special internal dialling tone.



Press the hash key and select the code digits 75.



Press the hash key. You hear a positive acknowledgement tone.



Replace the handset.

Configuration via Telephone

Resetting the Communications System

You can deactivate or delete all activated features and activate all default settings instead. This resets your system to the delivery state (i.e. the factory settings are active again).

Restoring the Default Settings

The secret PIN is reset to 0000.



Lift the handset. The configuration mode is active and you hear a special internal dialling tone.



Select the code digits 900.



Press the hash key. After a moment you hear a positive acknowledgement tone.



Replace the handset.

Remote Configuration

Remote Configuration

If you decide not to configure your Eumex 504PC SE yourself, you can have it configured remotely by TeleService for a fee. Call TeleService for advice, and list your configuration requirements. TeleService will then remotely configure your communications system.

Please follow the TeleService advisor's instructions. Call 0180 2 55 66 55.

The PC Software

General

In conjunction with a PC and the USB port **or** serial (V.24) interface, the communications software supplied enables you to use the following ISDN services: data transfer, class 3 and 4 fax transmission and reception, e-mail, mailbox, answerphone and Internet applications.

Note: If both interfaces are busy, the PC connected via USB has priority. The PC connected via the V.24 interface can only access the communications system when the USB interface is no longer busy.

You can configure the Eumex 504PC SE, changing the preset values to meet your own requirements. You can do this in three ways: menu-driven configuration via a PC, configuration via a telephone connected to your communications system (see the chapter entitled "Configuration via Telephone" on p. 39), or you can have your Eumex 504PC SE remotely configured by TeleService for a fee (call 0180 2 55 66 55).

If you attempt to configure the system from a PC while configuration from a connected telephone is taking place, a warning will appear on your screen. Similarly, if there is an attempt to configure the system from a connected telephone while configuration from a PC is taking place, a busy tone will be signalled.

Configuration does not impair operation of the communications system or interrupt calls. The new settings are only active after you have exported the configuration file to the Eumex 504PC SE or saved the settings in the PC Configurator.

You can only configure the Eumex 504PC SE after entering a valid PIN. The default setting on delivery is 0000 (i.e. the digit "zero" four times).

Using the command "Save file as ...," you can save a number of different configuration files. You can then export them to the Eumex 504PC SE as required, thus reconfiguring the system with a mouse-click.

System Prerequisites

The system prerequisites for the installation of the Eumex 504PC SE software on your PC are as follows:

- IBM-compatible PC with a hard-disk and CD-ROM drive
- CPU speed of 233 MHz or faster
- Minimum of 64 MB RAM
- Microsoft Windows 98/Me/2000/XP*
- One free USB port or serial interface (COM port) RS 232 (V.24).

* Windows 95/NT4 are also supported. However, there is no guarantee that the complete range of functions will be available, as these operating systems do not support USB. Connect PCs with these operating systems via the serial interface (V.24). This interface must be equipped with a UART 16550 chip enabling a data throughput rate of at least 115 kb/s. PCs built in or after 1996 generally have this chip. Please refer to your PC manual or ask your dealer or the manufacturer of your PC. In addition, the Eumex 504PC SE must already have been installed in accordance with the diagram in the chapter entitled "Connecting Devices" on p. 10.

Important Note

Before you install the Eumex 504PC SE driver software, you must first remove any existing ISDN card and uninstall any existing CAPI drivers.

About the Software

On the CD-ROM supplied you will find the following software:

- **The Eumex 504PC SE system software** contains the software necessary for operating the Eumex 504PC SE including the **CAPI**, **CAPI Port**, **CAPI Control** and **TAPI** drivers, as well as the configuration program for programming the communications system..
- Teledat **RVS-COM** is a suite of PC applications:
 - **RVS CommCenter** is activated automatically when Windows is started. As long as the PC is running, it enables continuous reception for data transfer, fax and answerphone with remote enquiry.
 - **RVS Fax** enables the transmission and reception of class 3 and 4 faxes.
 - **RVS Terminal** is a terminal emulation enabling the establishment of connections to mailboxes, for instance.
 - **RVS Telephone**, in conjunction with a full-duplex soundcard, microphone and loudspeaker, acts as an ISDN telephone with answerphone.
 - **RVS TransferMaster** enables the transfer of files complying with the Euro-file transfer standard to and from other PCs.
 - **RVS VideoPhone** establishes a connection to a partner with an RVS VideoPhone, the TELES.VISION system or an H.320-compatible video telephone. Calls can be made to RVS VideoPhone just like a normal video telephone.
 - **RVS Address Manager** has a central address book, which can be used in all Teledat RVS-COM applications.
 - **RVS SMS** enables you to edit and send SMS.
- **T-Online Software** is the software suite necessary for access to T-Online.

Installing the Software

Installing the Software

Before beginning with the software installation, you must ensure that any existing ISDN installation on your PC is deactivated or uninstalled. No other CAPI drivers must be installed, because this could result in conflicts between the various CAPI drivers.

In order to be able to use the CAPI/TAPI applications, the Eumex 504PC SE software (Expressinstallation (quick installation)) must be installed on every one of the PCs you want to connect.

Note: The software is easiest to install on your PC **before** you connect the PC to the Eumex 504PC SE.

Insert the Eumex 504PC SE CD-ROM in the drive of your PC. Depending on how the PC is configured, the installation program will start automatically (if "Autostart" is active). If the program does not start automatically, please start "Setup.exe" (in the root folder of the CD-ROM) manually.

In the screen that opens, you can select the programs and files you wish to install; "Expressinstallation" (quick installation) only installs the Eumex 504PC SE software.

This includes:

- Drivers
- Flashload
- Monitoring program (displays status and settings in the taskbar)
- CAPI access
- TAPI access.

"Vollständige Installation" (full installation) installs all the program modules of the compact installation, plus the T-Online software. "Benutzerdefinierte Installation" (custom installation) enables you to select the modules on the CD that you want. In order to install Teledat RVS COM, please click on the corresponding menu item.



Installing the Software

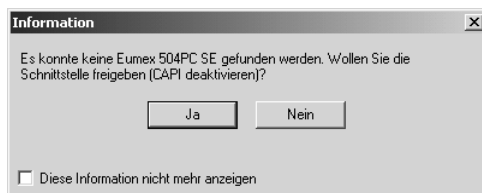
Follow the instructions in the installation program. If the installation wizard reports finding newer files, please do not overwrite them. During the installation process, additional explanations are displayed in the relevant screens.

When the installation is complete, you are prompted to restart your PC.

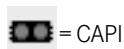


Now connect your PC to the Eumex 504PC SE and restart your PC.

If your PC is not correctly connected to the Eumex 504PC SE, the following screen opens:



After the restart, the PC is ready for operation and the icon depicted below appears in the taskbar.



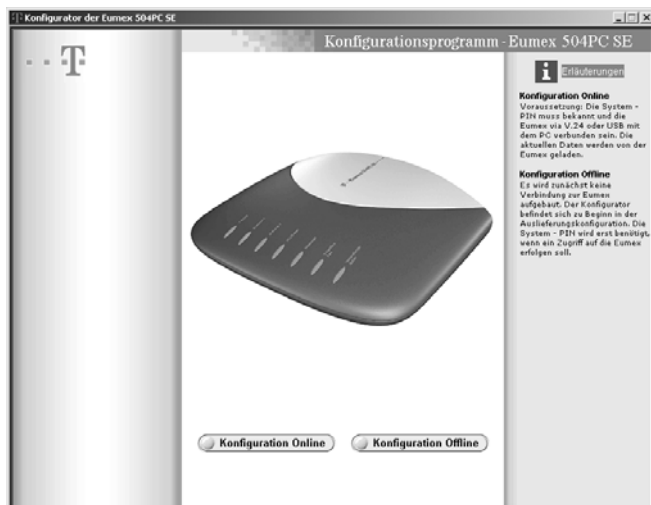
Note:

If you connect the Eumex 504PC SE to the PC via the USB interface prior to installing the software, the Windows hardware wizard will report finding a new hardware component. If necessary, enter the correct path to the Eumex 504PC SE CD-ROM.

Configuring the System

Configuring the Eumex 504PC SE

Start the "Eumex 504PC SE" shortcut, or start your browser and **type "Eumex504" in the address line**. The Eumex 504PC SE configuration program opens in the browser window.



If you select "**Konfiguration Offline**" (offline configuration) you can save the configuration on the hard disk under a name of your choice. You can thus create several configurations for various different purposes, and then conveniently export them to the communications system as required.

If you select "**Konfiguration Online**" (online configuration), the current configuration will be loaded. When you have edited it, it is written back to the system.

Access to "Konfiguration Online" (online configuration) is protected by a PIN. In the default setting on delivery, this PIN is 0000 (the digit "zero" four times). This is the same as the PIN you need to start the configuration mode from a telephone. You can edit the PIN from a connected telephone (see also "Editing the PIN" on p. 41).

You can also edit the PIN in the Configurator using the menu item "Speichern/Laden" (Save/load) (see p. 82).



Configuring the System

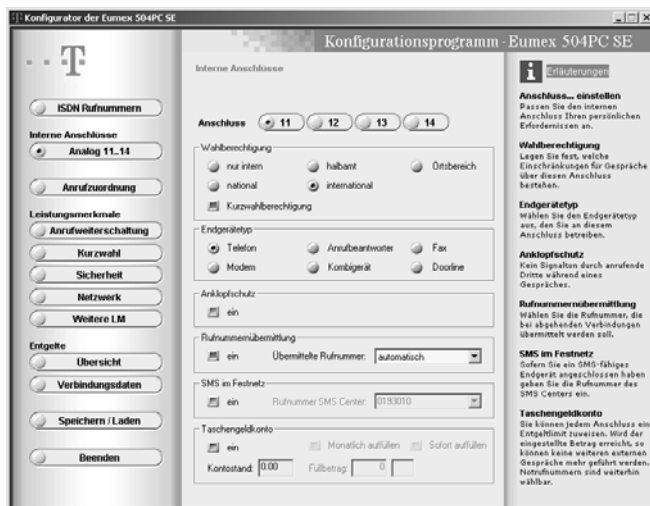
Menu: ISDN Telephone Numbers (MSNs)

Type in the telephone numbers (MSNs) assigned to you for your ISDN connection by Deutsche Telekom, without an area code.
Storing telephone numbers (MSNs).

Configuring the System

Menu: Internal Lines

You can edit various settings for every connected terminal (internal line numbers 11, 12, 13 and 14).



- Note:
- You use the telephone numbers (MSNs) entered under "ISDN Extern" (ISDN external) for setting calling line number presentation.
 - Tick "Kurzwahlberechtigung" (Speed dialling access) in the item "Externberechtigung" (External line access) to enable connected terminals with "internal only" or "outward restricted" external line access to dial speed-dialling destinations, even though these destinations are outside the external line access area.
 - When the respective terminal is selected, the optimum settings for this type of device are automatically selected (e.g. "Call-waiting protection" -> "on" when a fax machine or modem is connected).
 - Tick "SMS im Festnetz" (SMS in the wired network) to assign the respective SMS-capable internal telephone line to the corresponding MSN. In order to contact every internal telephone specifically, the respective lines must be assigned different telephone numbers for calling line number presentation. You edit this setting for the analogue lines 11 - 14 in the

Configuring the System

"Rufnummernübermittlung" (Calling line presentation) screen. In addition, you can assign each internal line its own SMS Centre number. If you have not assigned an outgoing number (MSN), and SMS is active for this line, the exchange uses your first MSN.

- The charge account function depends on the charge information available at your connection (see "AOCD / AOCE" in the glossary).

Menu: Call Assignment (Day/Night Line Switchover)

When an external call comes in for a specific MSN, it is signalled at the assigned terminal.

Assign the connected terminals one or more MSNs. Here you can enter different call distributions for variant 1 (day line) and variant 2 (night line). If necessary, enter the times at which the day line distribution is to switch over to night line distribution, and back again.

Konfigurator der Eumex 504PC SE

Konfigurationsprogramm - Eumex 504PC SE

Anrufzuordnung

Anrufzuordnung ☒ Tag ☐ Nacht

Rufnummern (MSN) 1 1234 ☐ ☐ ☐ ☐

Rufnummern (MSN) 2 5678 ☐ ☐ ☐ ☐

Rufnummern (MSN) 3 9012 ☐ ☐ ☐ ☐

Rufnummern (MSN) 4 3456 ☐ ☐ ☐ ☐

Rufnummern (MSN) 5 ☐ ☐ ☐ ☐

Rufnummern (MSN) 6 ☐ ☐ ☐ ☐

Rufnummern (MSN) 7 ☐ ☐ ☐ ☐

Rufnummern (MSN) 8 ☐ ☐ ☐ ☐

Rufnummern (MSN) 9 ☐ ☐ ☐ ☐

Rufnummern (MSN) 10 ☐ ☐ ☐ ☐

Einstellungen

Übergang Nacht/Tag: 07:00 Übergang Tag/Nacht: 21:00

Aktive Anrufzuordnung

☒ Tagverteilung ☐ Nachtverteilung ☐ Zeitgesteuert

Erklärungen

Anrufzuordnung auswählen
Sie können festlegen bei welchen internen Anschlüssen es "Eingangs" soll, wenn ein Anruf unter einer bestimmten ISDN Rufnummer ankommt.

Es können zwei Profile
konfiguriert werden. Die aktive Anrufzuordnung kann manuell oder zeitgesteuert festgelegt werden. Wenn Sie ein Anrufgespräch führen, wird die Uhrzeit in der Eumex automatisch aktualisiert.

Button Tag/Nacht
Legen Sie für die Tag-/Nachtverteilung fest, bei welchen internen Anschlüssen es "Eingangs" soll, wenn ein Anruf unter einer bestimmten MSN ankommt.

Tagverteilung / Nachtverteilung
Wünschen Sie eine feste, zeitunabhängige Aufteilung, so können Sie zwischen der Tag- oder Nachtverteilung wählen. Diese ist dann immer aktiv.

Zeitgesteuert
Wählen Sie zeitgesteuert, wenn die Eumex automatisch zu den von Ihnen angegebenen Uhrzeiten von Tag- auf Nachtverteilung, bzw. umgekehrt, umschalten soll.

Configuring the System

Menu: Call Forwarding

The call forwarding input screen depends on the type of call forwarding selected ("in the exchange" or "in the communications system").

Call forwarding in the communications system (Anrufweiterschaltung in der Anlage)

When calls are to be forwarded in the communications system, you specify a call forwarding destination for incoming calls to each of the connected terminals.

If calls are forwarded to an external destination, both B-channels are busy for the duration of the outgoing call; the connection is thus busy. Call charges incurred for the forwarded call are billed to the line from which the call was forwarded.

You have the following options:

Call forwarding immediately (Anrufweiterschaltung sofort): every incoming call is immediately forwarded to the given destination.

Call forwarding after a specified time (Anrufweiterschaltung nach Zeit): the call is forwarded to the given destination if the terminal called does not lift the handset within approx. 20 seconds.

Call forwarding on busy (Anrufweiterschaltung bei Besetzt): if the terminal called is busy and call-waiting protection is active, every further call is forwarded to the given destination.

The screenshot shows the 'Konfigurationsprogramm - Eumex 504PC SE' window. The left sidebar contains a tree view with 'Anrufweiterschaltung' selected. The main area is titled 'Anrufweiterschaltung' and contains the following sections:

- Voreinstellung:** Radio buttons for 'in der Anlage' (selected) and 'in der Vermittlungsstelle'.
- Anschluss:** A row of buttons for lines 11, 12, 13, and 14. Line 12 is selected.
- Anrufweiterschaltung sofort:** A section with three rows of radio buttons for 'en', 'intern', and 'extern'. The 'intern' option is selected for all three rows, each with a dropdown menu showing '12'.
- Anrufweiterschaltung nach Zeit:** A section with three rows of radio buttons for 'en', 'intern', and 'extern'. The 'intern' option is selected for all three rows, each with a dropdown menu showing '12'.
- Anrufweiterschaltung bei besetzt:** A section with three rows of radio buttons for 'en', 'intern', and 'extern'. The 'intern' option is selected for all three rows, each with a dropdown menu showing '12'.

On the right side, there is an 'Erläuterungen' (Explanations) section with the following text:

Voreinstellung: Sie können zwischen den zwei Varianten:
- Anrufweiterschaltung in der Anlage oder
- Anrufweiterschaltung in der Vermittlungsstelle wählen.

Anrufweiterschaltung für Anschluss...
Für die Anrufweiterschaltung gibt es folgende Möglichkeiten:
- Sofort
- Nach Zeit
- Bei Besetzt
Klicken Sie auf das jeweilige Kontrollkästchen, um die entsprechende Funktion zu aktivieren oder zu deaktivieren und wählen Sie anschließend als Ziel einen internen Anschluss oder eine externe Rufnummer aus.

Hinweis: Die Eingabe einer Anschlussplananzahl darf an dieser Stelle nicht erfolgen. Die Anlage erkennt und regelt dies automatisch.

Solange die Anrufweiterschaltung "Sofort" ausgewählt ist, bleibt die Anrufweiterschaltung "Nach Zeit" oder "Bei Besetzt" wirkungslos.

Configuring the System

Call forwarding in the exchange (Anrufweiterschaltung in der Vermittlungsstelle)

When calls are to be forwarded in the exchange, you specify a call-forwarding destination for incoming calls to each of the entered MSNs. As opposed to call forwarding in the communications system, the connection is not busy for the duration of call forwarding, and the other MSNs can be called.

This feature must be available on your ISDN connection.

The call forwarding options here are the same as those for call forwarding in the communications system (see the preceding section).

Konfigurator der Eumex 504PC SE

Konfigurationsprogramm - Eumex 504PC SE

Anrufweiterschaltung

Voreinstellung

☐ in der Anlage ☒ in der Vermittlungsstelle

Anrufweiterschaltung

☒ sofort ☐ nach Zeit ☐ bei Besetzt

Ihre Rufnummer	Zeit der Anrufweiterschaltung	
1234	[dropdown]	[icon] ein
5678	[dropdown]	[icon] ein
9012	[dropdown]	[icon] ein
3456	[dropdown]	[icon] ein
	[dropdown]	[icon] ein
	[dropdown]	[icon] ein
	[dropdown]	[icon] ein
	[dropdown]	[icon] ein

Anrufweiterschaltungen

Hilfseinstellungen

Voreinstellung

Sie können zwischen den zwei Varianten wählen:

- Anrufweiterschaltung in der Anlage oder
- Anrufweiterschaltung in der Vermittlungsstelle wählen.

Anrufweiterschaltung für ISDN Rufnummern...

Für die Anrufweiterschaltung gibt es folgende Möglichkeiten:

- Sofort
- Nach Zeit
- Bei Besetzt

Klicken Sie auf das jeweilige Kontrollkästchen, um die entsprechende Funktion zu aktivieren oder zu deaktivieren.

Geben Sie Ihre vollständige Zielrufnummer mit Vorwahlnummer in das jeweilige Textfeld ein.

Hinweis:

Die Eingabe einer Anrufweiterschaltung "Sofort" ausgewählt ist, bleibt die Anrufweiterschaltung "Nach Zeit" oder "Bei Besetzt" wirkungslos.

Configuring the System

Menu: Speed Dialling

List of speed-dialling numbers (Verzeichnis der Kurzwahlruffnummern)

Enter your speed-dialling numbers in this list. The digit under "KW" is the code number of the memory location you use to dial the number, while under "Vanity" you enter the name you want to use to dial the number.

The screenshot shows the 'Konfigurationsprogramm - Eumex 504PC SE' window. On the left is a sidebar with a tree view containing categories like 'ISDN Rufnummern', 'Interne Anschlüsse', 'Anrufzuordnung', 'Leistungsmerkmale', 'Entgelte', and 'Verbindungsdaten'. The 'Leistungsmerkmale' category is expanded, showing sub-items: 'Anrufweitererschaltung', 'Kurzwahl' (selected), 'Sicherheit', 'Netzwerk', and 'Weitere LM'. The main area is titled 'Konfigurationsprogramm - Eumex 504PC SE' and 'Kurzwahl'. It contains a table titled 'Verzeichnis der Kurzwahl-Rufnummern' with columns 'KW', 'Vanity', 'Rufnummer', and 'Name'. The table has 20 rows, with the first two rows populated: row 01 has 'ab' in Vanity and '4711' in Rufnummer; row 02 has 'fg' in Vanity and '5644' in Rufnummer. Below the table are buttons for 'Eintrag bearbeiten', 'Liste aus Anlage lesen', 'Liste zur Anlage übertragen', 'Alles löschen', and 'Markierte Einträge löschen'. On the right, there is an 'Erläuterungen' section with text explaining the 'Kurzwahl-Liste', 'Kurzwahlnummer', 'Vanity', 'Rufnummer', and 'Name' fields.

KW	Vanity	Rufnummer	Name
01	ab	4711	abc
02	fg	5644	hgh
03			
04			
05			
06			
07			
08			
09			
10			
11			
12			
13			
14			
15			
16			
17			
18			
19			
20			

Configuring the System

Menu: Security – Filter Settings

In this list you enter the numbers and addresses to be blocked.

In the **Internet address filter** you enter the Internet addresses you want to block, i.e. to which no connection is to be possible. The monitoring function aborts the connection procedure as soon as it recognises a correspondence between the addresses. In order to configure the filter, you enter the name of the server, i.e. that section of the address following "http://" or "ftp://." Here you can use the "*" as a wildcard standing for one or more characters. The address is not case-sensitive. For example, to block all Internet addresses containing the character string "xy," you enter "*xy*." For further information, please refer to the text file "URLFilter.txt" on the CD-ROM supplied.

To block faxes, you enter the telephone numbers from which faxes are to be rejected. You can enter max. 10 numbers here.

To block faxes sent without transmission of the telephone number, you enter "*" (star) as the number to be blocked. Please note that when you block faxes you also block telephone calls, because in the case of incoming calls, there is no distinction between a faxes and a normal call.

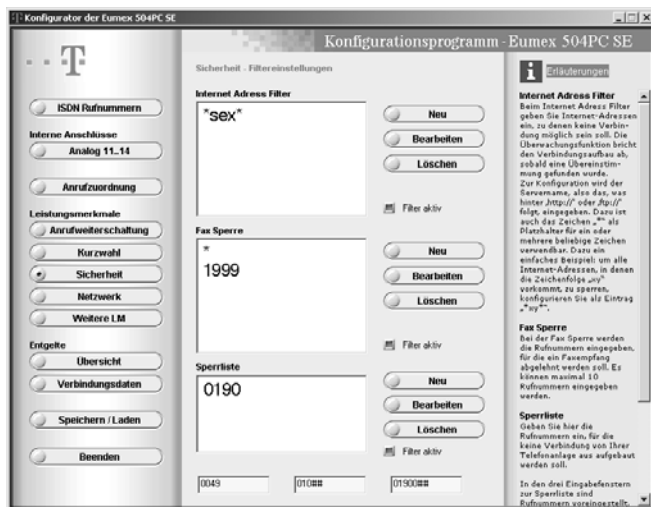
Configuring the System

You enter numbers in the **blacklist** here as in the example depicted in the screen: no connections are to be established from your communications system to the number "0190." This blocks all 0190 numbers.

Example: In order to block 0190 numbers, you enter "0190" in the blacklist. All attempts to dial them are aborted after "0-1-9-0." You can enter up to five numbers.

At the bottom of the three blacklist input screens there are preset telephone numbers you can use to prefix the numbers you want to block (e.g. national code, network prefix).

This enables the recognition of a blocked number appearing subsequent to the prefix you have blocked. You can edit these entries as required. Enter a "#" (hash) as a wildcard to stand for any digit.



Configuring the System

Menu: Network Settings

In this menu you enter or edit your Internet access data. In addition, you use "Router-einstellungen/Haltezeit" (Router settings/retention period) to set the period after which an existing Internet connection is disconnected if no data more traffic is detected.

Activate the firewall function (port filter) for your Eumex 504PC SE to prevent other PCs attacking your PC. When the firewall function is active, all incoming connections are rejected. When the firewall is deactivated, however, all incoming connections are accepted. It is not possible to program the firewall function for individual ports.

Important Note

When the firewall function (port filter) is active, other PCs have no access to the data on your PC.

Your communications system provides automatic Internet dial-up. This means that when your PC requests data from the Internet, the connection to your Internet provider is automatically established. Please note that not only requests you start from your browser lead to the establishment of connections: many commercial programs access the Internet unnoticed in the background (e.g. to update software). If you do not have flat-rate Internet access, this can lead to increased call charges. To avoid this, configure all relevant programs so that automatic Internet access does not take place.

Konfigurator der Eumex 504PC SE

Konfigurationsprogramm - Eumex 504PC SE

Netzwerkneinstellungen

Internet-Zugang

Zugangsdaten

☒ T-Online ☐ Anderer Internet Service Provider

Anschlusskennung:

T-Online Nummer:

Mitbenutzerzusage:

Rufnummer:

Passwort:

MSN gehend:

Router-einstellungen

Haltezeit: sec

Firewallfunktion (Portfilter): ☒ ein

Erläuterungen

Netzwerkeinstellungen

Hier können Sie Ihre Internet-Zugangsdaten eingeben. Außerdem stellen Sie unter "Router-einstellungen/Haltezeit" die Zeit ein, nach der eine bestehende Internet-Verbindung abgebrochen wird, wenn kein Datenverkehr mehr festzustellen ist.

Wenn Sie den Portfilter für Ihre Eumex ausschalten, deaktivieren Sie die Firewallfunktion.

Wichtig: Bitte schützen Sie den Filter nur aus, wenn Sie wollen, dass fremde Rechner Zugriff auf Daten Ihres PCs haben sollen, z.B. bei der Durchführung von Spielen im Internet.

Configuring the System

Menu: Additional Features

In this menu you edit further Eumex 504PC SE settings.



External line seizure (Belegen der Wählleitung)

The setting "mit 0" (with 0) means that you have to dial 0 before dialling an external number. "Automatisch" (Automatic) is the default setting, and means that you can dial the external number immediately. Please note that when this setting is active, it is not possible to dial internal numbers from telephones with pulse dialling.

Number busy feature (Leistungsmerkmal Rufnummer besetzt)

When this feature is active, a subscriber who calls an MSN that is busy hears the busy tone.

T-NetBox answerphone and fax message service (Benachrichtigungsdienst T-NetBox AB und Fax)

You can activate and deactivate the LED that signals message waiting or fax received ("Message" LED).

Call-Through (Call Through)

You can specify an MSN that is to react to a call by making the second B-channel of your ISDN connection available for call through. Select one of the available MSNs from the list to be used for call through via the second ISDN B-channel. The selected MSN can then only be used for call through.

Configuring the System

Emergency numbers (Notrufnummern)

You can set up three emergency numbers (preset are 110 and 112), which can always be dialled from a telephone, independent of its external line access. You can also use the emergency number memory location to save an area code (e.g. 030). Telephones without external line access can thus be used to call numbers in this area, while all other external calls remain blocked.

ECT (Call transfer) (Gesprächsweitergabe)

This ISDN feature enables two external calls to be connected in the exchange. If the ISDN ECT service is available in the exchange, you can activate and deactivate the function.

Automatic keypad signalling (Automatische Keypad-Signalisierung)

If your Eumex 504PC SE is installed as a secondary system behind another communications system, it may be necessary (depending on the type of primary system) to change the signalling procedure of the Eumex 504PC SE from "Keypad" (the default setting on delivery) to "Number." This deactivates the automatic switchover to keypad triggered by pressing the star or hash keys. The star and hash keys can then also be used as dialling digits. Please refer to the documentation of your primary system for information on the signalling procedure required.

Number translation (Rufnummer Umsetzung)

You have probably entered MSNs in your CAPI applications (communications software, e.g. Teledat RVS-COM) to enable external incoming calls to reach your fax software or answerphone. To enable this for internal (free of charge) calls too, number translation is required. Assign a CAPI application MSN an internal number (20 to 29) under which the corresponding application can be reached by internal subscribers. You can assign up to three numbers.

Configuring the System

Menu: Charges – Summary

In this menu you can use various criteria to view summaries of the call charges incurred.

Konfigurationsprogramm - Eumex 504PC SE

Endgültige - Übersicht

Rufnummer	Entgelte	Port	Entgelte
1234	0.00 EUR	11	0.00 EUR
5670	0.00 EUR	12	0.00 EUR
9012	0.00 EUR	13	0.00 EUR
3456	0.00 EUR	14	0.00 EUR
	0.00 EUR		
	0.00 EUR	Summe Analog	0.00 EUR
	0.00 EUR	PC:	0.00 EUR
	0.00 EUR	Gesamtsumme	0.00 EUR
	0.00 EUR	Währung:	EUR
	0.00 EUR	Faktor:	0.06
ohne Zuordnung	0.00 EUR		

Überblick Entgelte
In diesem Menü können Sie sich eine Übersicht über die angefallenen Verbindungsgebühren, sortiert nach zugewiesener MSN oder sortiert nach internem Teilnehmer, ansehen. Tragen Sie im Feld "Währung" die von Ihnen gewünschte Währung ein. Im Feld "Faktor" können Sie den aktuellen Entgeltfaktor eingeben.

Buttons: Stand von der Anlage lesen, Zähler zurücksetzen

Read system data (Stand von der Anlage lesen)

Click on this button to update the displayed data.

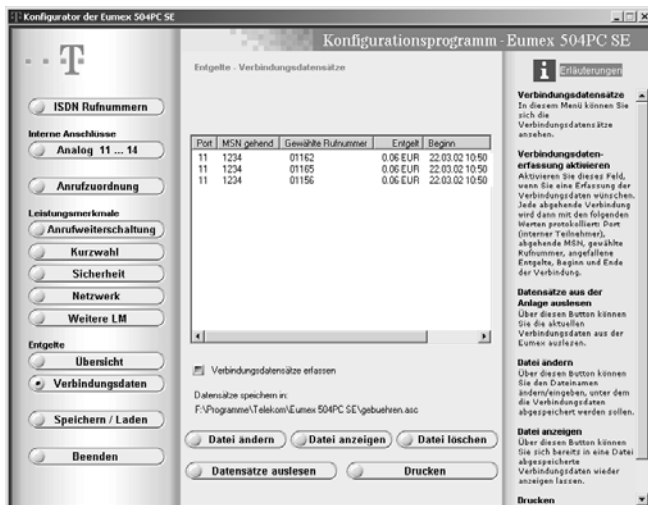
Reset counter (Zähler zurücksetzen)

Click on this button to reset the sum total of the call charges in the communications system to 0.

Configuring the System

Menu: Charges – Call Data Records

In this menu you can view a list of call data records.



Record call data (Verbindungsdatensätze erfassen)

Activate this feature to record and save call data.

Edit file (Datei ändern)

You can edit the name of the file used to save the data.

Display file (Datei anzeigen)

The file selected under "Edit file" is displayed.

Delete file (Datei löschen)

The file selected under "Edit file" is deleted.

Read out data records (Datensätze auslesen)

The current data records are read out of your Eumex 504PC SE and added to the file selected under "Edit file."

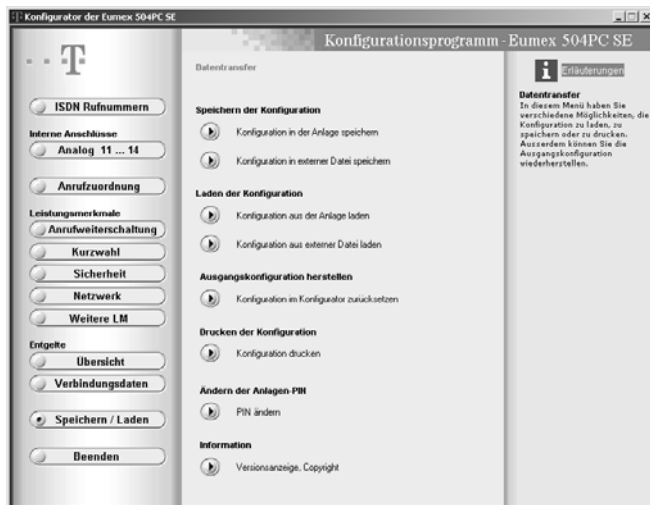
Print (Drucken)

The file selected under "Edit file" is printed.

Configuring the System

Menu: Saving/Loading

This menu offers you various options for saving or loading the configuration.



Save configuration (Speichern der Konfiguration)

You can select whether you want to save the current configuration in the system or to the hard disk of your PC.

Load configuration (Laden der Konfiguration)

You can select whether you want to load the current configuration from the system or a file that was saved to the hard disk of your PC.

Discard changes (Ausgangskonfiguration herstellen)

Any changes you made since reading out the file from Eumex 504PC SE or opening the file from the hard disk are discarded.

Print configuration (Drucken der Konfiguration)

You can print the current configuration.

Edit system PIN (Ändern der Anlagen-PIN)

You can edit the current PIN (personal identification number) for the communications system.

Connecting to and Disconnecting from the Internet

Connecting to the Internet

When you open a browser (e.g. Internet Explorer or Netscape Communicator) or an e-mail program on the PC connected to the Eumex 504PC SE, the PC will automatically be connected to the Internet. This connection uses the built-in network card function for fast Internet access (NDIS interface for Internet access without dial-up network). Your Internet connection is retained for the length of the retention period set in the PC Configurator, then automatically disconnected.

Note

Your system has a preset retention period of 180 seconds for an Internet connection. If you often access the Internet for brief periods of time, e.g. to download e-mail, this can lead to increased costs because the connection is retained for the preset length of time. You can set the retention time according to your own requirements. For information on checking and updating the access data in the system, please see p. 77.

Your system manages the B-channels dynamically when channel bundling is active. If both B-channels are busy with data traffic and there is an incoming or outgoing telephone call, one of the B-channels is made available for the call, after which it is switched back to data traffic.

Alternative Internet access

As an alternative to Internet access using the access data entered in the PC Configurator, you can create a dial-up network entry. For further details (e.g. channel bundling), please refer to your operating system documentation.

In order to establish a connection, you double click on the corresponding dial-up network entry or its shortcut, and enter the necessary data (user name, password and number, if required).

You first connect to the Internet using dial-up networking, then start your browser. In this case, the dial-up networking connection is used and the access data in the PC Configurator ignored.

Note

When you start your browser for the first time, the Internet Connection Wizard opens. Here you set the connection type to "LAN" and confirm with "OK." The Eumex 504PC SE already has all the components necessary for Internet operation, and so no additional configuration under Windows is required.

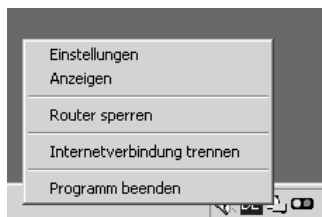
Connecting to and Disconnecting from the Internet

Disconnecting from the Internet

When the Eumex 504PC SE network card function (router functionality) for fast Internet access (NDIS interface for Internet access without dial-up network) determines that the retention time set in the PC Configurator has elapsed and that there has been no data traffic during this period, it automatically disconnects from the Internet.

To disconnect from the Internet manually, click with the right-hand mouse button on the depicted "HomeNet Control" symbol (🖱️) on the lower right of your screen in the Windows taskbar, and select "Internetverbindung trennen" (Disconnect).

"Anzeigen" (Display) provides information about the current connection such as the data transfer speed, the duration of the connection and the amount of data sent and received.



Starting a Program from the Windows Taskbar

Starting a Program from the Windows Taskbar

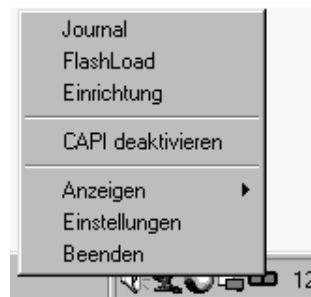
In the lower right-hand corner of the Windows taskbar you find the depicted icon in the form of an LED for each of the B-channels. The colour of the LEDs indicates the CAPI status.



The colours have the following meanings:

- red - deactivated
- yellow - no connection to device
- grey - connection to device
- green - connection to ISDN

After a click with the right-hand mouse button, the pop-up menu enables you to start one of the following Eumex 504PC SE programs or edit settings:



Journal (Journal): opens the call list.

FlashLoad (FlashLoad): starts the program that updates your Eumex 504PC SE system software (see p. 88).

Setup (Einrichtung): starts your Eumex 504PC SE configuration software (see p. 68).

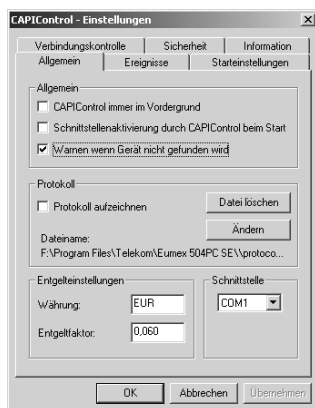
Activate/deactivate CAPI (CAPI deaktivieren/aktivieren): switches the CAPI on or off, depending on the current status.

Display (Anzeigen): specifies the size of the active CAPI connection display. You can select from "kompakt" (compact), "standard" (default) and "erweitert" (detailed).

Settings (Einstellungen): opens the CAPI Control program. You can use this to edit various CAPI settings (see p. 86).

CAPI Control

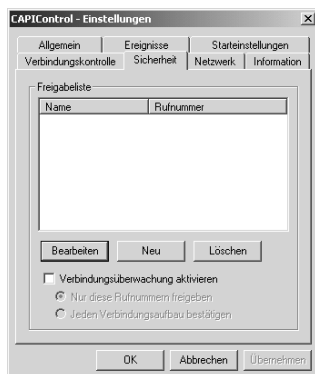
The CAPI Control program provides you with comprehensive information about an existing connection, and enables you to edit a number of CAPI settings. Windows starts this program automatically, and you can invoke it via the taskbar. For further information about each of the available tabs, click on the Help button.



You can, for example, set the currency (see diagram). Setting the charge factor in CAPI Control has no effect on the setting in your Eumex 504PC SE.

Note: The checkbox "Warnen, wenn Gerät nicht gefunden wird" (Warn if device not found) is only available if a serial interface (COM port) has been selected.

Protection against undesired connections



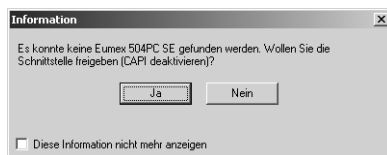
Click on the "Sicherheit" (**Security**) tab. When you have clicked on the "Neu" (**New**) tab, you can enter a name for the connection and a number which can be used for establishing this connection. You can enter several numbers. Activate connection monitoring by clicking on the corresponding button. A tick appears there when the function is active. In this way you ensure that dial-up connections (and fax connections) started via the dial-up network entry can be established only to the numbers contained in this list.

Note: These settings are valid only for an explicitly created dial-up network connection to the Internet. The numbers for connections established via the network card function for fast Internet access (NDIS interface for Internet access without dial-up network) are entered in the PC Configurator.

Releasing the interface (only for connection via the COM port)

When CAPI Control starts (this can be set to occur automatically every time the system is booted), there is an attempt to communicate to a CAPI device such as your Eumex 540PC SE connected to a serial interface (COM port). If no device is found, you see a message to this effect.

You are prompted to either release the interface and thus deactivate CAPI, or not.



If, for example, you have installed the software on a laptop which is only sporadically connected to a Eumex 504PC SE, you can tick the "Diese Information nicht mehr anzeigen" (Do not display this screen again) checkbox. This suppresses the display of this information every time you boot the system. The subsequent function depends on the button you use to exit this information screen:

If you click on "Ja" (**Yes**), the interface is released on subsequent starts if no communications system is found.

If you click on "Nein" (**No**), the interface will not be released if no communications system is found. In both cases, no further message appears.

If you want to undo these setting (i.e. so that the information screen opens when no system is found), open "CAPIControl - Einstellungen / Allgemein" (CAPI Control – Settings / General) (see above). The "Schnittstellenaktivierung durch CAPIControl beim Start" (Port activation by CAPIControl on starting) and "Warnen, wenn Gerät nicht gefunden wird" (Warn if device not found) checkboxes must both be active.

FlashLoad (Updating the Communications System Software)

You can update your Eumex 504PC SE system software yourself. This may be necessary when new features become available. You can download the newest version from the Internet under the following address:

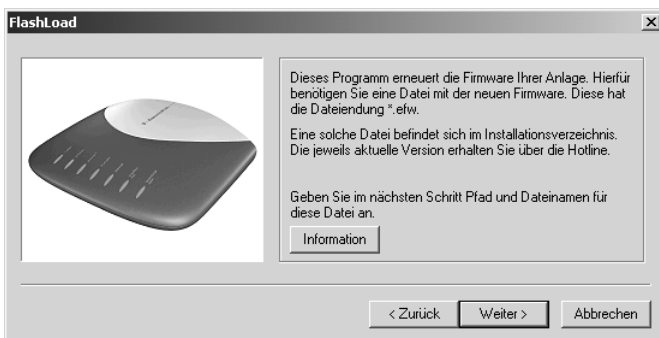
<http://www.telekom.de/faq>, where you click on "Endgeräte und Downloads" (**Devices and Downloads**) in the next screen on "**T-ISDN**," then on "ISDN-Telefonanlagen" (**ISDN communications systems**) and finally on "Eumex 504PC SE." There you click on "Treiber/Software" (**Drivers/software**), then select the file you want to download.

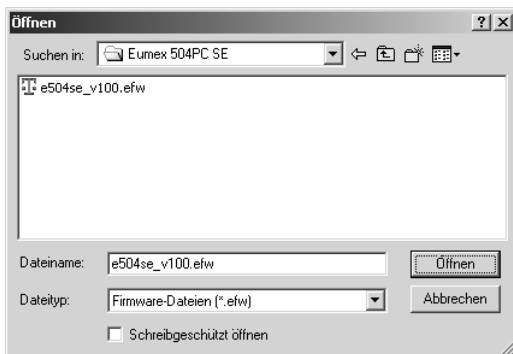
Read the description in the Internet to determine which file is used for your operating system, save this file to your hard disk, uninstall the previously used Eumex 504PC SE system software in accordance with your operating system, then start the downloaded file.

While the software is uploading to the Eumex 504PC SE, the communications system is deactivated, i.e. no calls can be made and any existing calls are disconnected. The procedure takes approximately one minute, after which the Eumex 504PC SE is fully operational again. The update does not affect your current configuration.

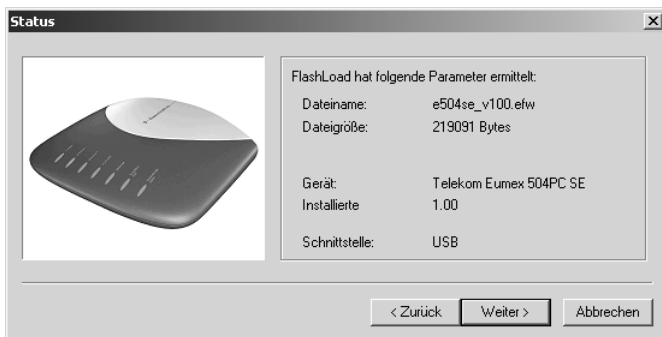
The system software update program can be found in the folder created by the installation program when the **complete installation** described at the beginning is carried out.

You start the FlashLoad program by double clicking, by selecting the Windows Start button, or by invoking it in the CAPI icon pop-up menu (see p. 85) and following the instructions on the screen.

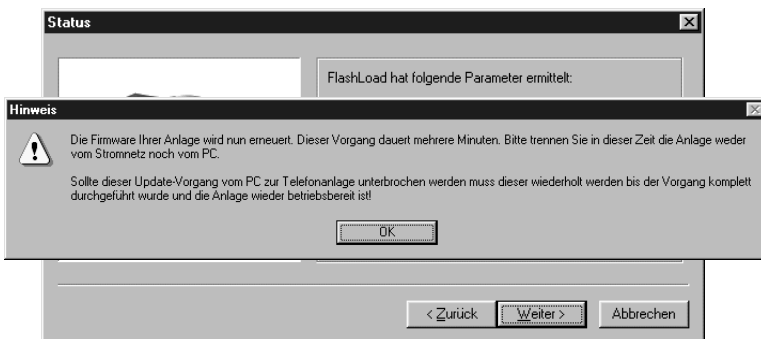




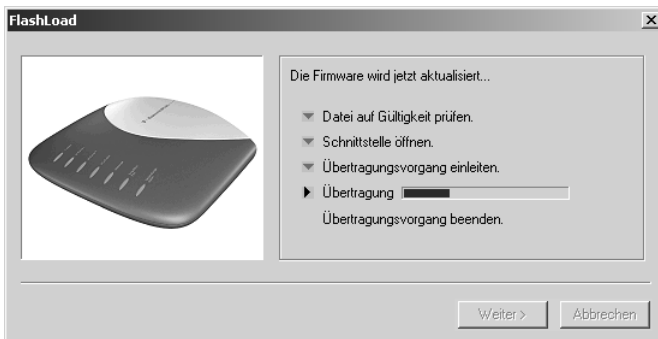
Select the system software to be loaded and open this file. You see the software version information.



Before the upload procedure begins, the screen depicted opens with important information about what to do during this procedure.



A monitoring screen keeps you informed about the current status of the upload. When the data transfer is complete, the program is automatically terminated, and the Eumex 504PC SE restarts.



Teledat RVS-COM

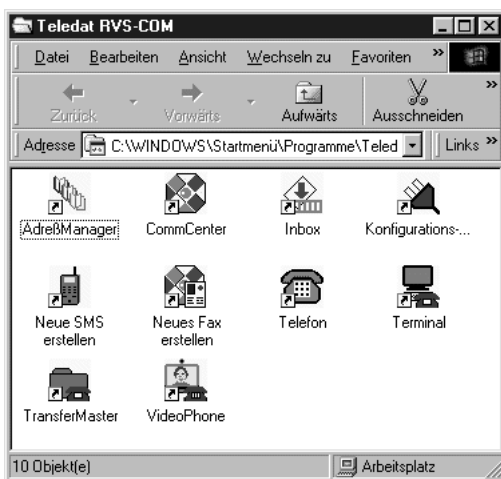
Basic Functions

The RVS-COM communications software enables you to emulate a fax machine, an answerphone or a terminal on your PC.

The prerequisite for installation is that you have already installed the CAPI (Common ISDN Application Programming Interface) with the Eumex 504PC SE system software.

All RVS-COM functions are available only when the PC is switched on.

Program Modules



The Teledat RVS-COM software package enables you to use all the ISDN services conveniently on your PC. Teledat RVS-COM consists of the following modules:

1. **RVS TransferMaster** is a file manager enabling fast and secure file transfer, e.g. to colleagues in the field.
2. **RVS Fax** enables you to send faxes directly from a text-processing program and to receive faxes on your PC.
3. **RVS Telephone** acts as an ISDN telephone with answerphone on your PC. To use this function, your PC must have a full-duplex soundcard.
4. **RVS Terminal** is a terminal emulation enabling your PC to establish connections to ISDN mailboxes.
5. **RVS VideoPhone** establishes a connection to a partner with an RVS VideoPhone, TELES.VISION system or an H.320-compatible video telephone. Calls can be made to RVS VideoPhone just like a normal video telephone.
6. **RVS Adressmanager** has a central address book which can be used in all RVS-COM applications.
7. **RVS SMS** enables you to send and receive SMS.
8. An analogue modem on a **virtual COM port** is emulated for other applications. This makes it possible to transfer data to destinations without ISDN connections.

COMM Center is started automatically when the PC is booted. You can confirm this by looking at the round icon in the Windows taskbar. The colour of the icon indicates the current status.

For more information about the individual modules, please use the comprehensive RVS-COM online help function.

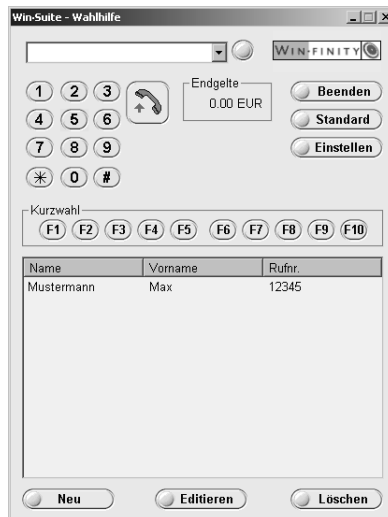
Dialling Wizard Software

Win-Suite – Dialling Wizard – User Interface

Open the Win Suite dialling wizard with the screen depicted by double clicking on the program symbol or the corresponding shortcut, or by starting the program via the Windows start button.



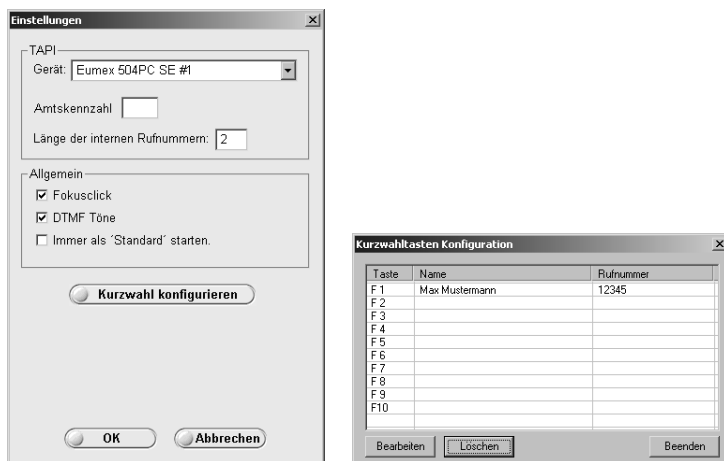
If you would like to have a telephone book displayed as well, click on the "Erweitert" (Details) button. You manage this telephone book using "Neu" (New), "Editieren" (Edit) and "Löschen" (Delete). You can select the speed-dialling entries (1 - 10) in the telephone book by means of the buttons depicted in the screen or the corresponding function keys of your computer keyboard.



Note: Existing calls are terminated by replacing the handset.

Win-Suite – Dialling Wizard – Settings

Click on "Einstellen" (Settings) button to edit the settings.



Device (Gerät): Select the TAPI-capable device (here the Eumex 504PC SE, #"Port-Nummer" (Internal line number))

External line seizure digit (Amtskennzahl): Enter the digit used to seize an external line

Length of internal number (Länge der internen Rufnummern):

Enter the length of the internal telephone numbers (in the case of a Eumex 504PC SE you must enter a "2" here)

General (Allgemein): Activate the option by ticking the corresponding checkbox

Fokusclic (Acoustic signal): An acoustic signal is heard when the mouse cursor is on the corresponding button.

DTMF-Töne (DTMF tones): DTMF tones are transmitted when you dial with the key buttons

Immer als "Standard" starten (Always start with default screen):

The Win-Suite – Dialling Wizard always starts with the default screen (the telephone book is not displayed).

Configure speed dialling (Kurzwahl konfigurieren):

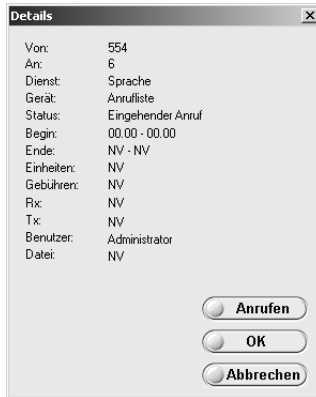
Configuration of speed-dialling destinations (function keys).

Note: The range of functions may be increased in future software releases.

Deutsche Telekom reserves the right to alter the appearance slightly.

Win-Suite – Call List – Dialling from the Call List

To display further details about a call, double click the desired entry or click on "Details" when the entry is selected (active).



Click on "Anrufen" (Dial) to dial the corresponding number automatically - the Dialling Wizard software starts and all you need to do is lift the handset and have your conversation.

Appendix

Audio Signals / Ringer Cadences

The following diagram shows the duration and intervals of the individual audio signals and ringer cadences.

Audio signals

Time in seconds

Ring tone

Busy tone

Internal dialling tone

External dialling tone

Positive acknowledgement tone

Negative acknowledgement tone

Internal special dialling tone

External special dialling tone

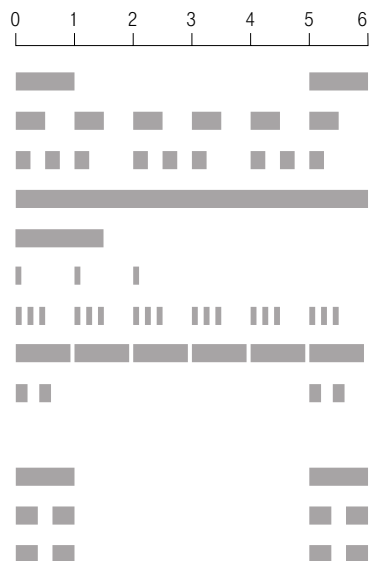
Call-waiting tone

Rings

External call

Internal call

Recall



Technical Specifications

Communications system

Mains power supply	230 VAC ; 50 Hz for the AC adapter
Rated power	max. 23 W
Safety class	2
Dimensions (W x H x D)	approx. 214 x 161 x 57 mm
Weight (system)	approx. 385 g
Permissible temperatures Stationary, weatherproofed	+5°C to +40°C

ISDN connection

External ISDN connection	DSS1 protocol, multi-terminal connection,
ISDN port	looped-through external S_0 bus

Analogue ports

Range	300 m (0.6 mm \varnothing)
Dialling procedures	DTMF or pulse dialling
Ringing voltage	$U_{\text{eff}} \geq 35 \text{ VAC}$
Ringing frequency	50 Hz (network frequency)

Dealing with Faults

If your system does not function as desired, first try getting it to work with the help of the table below.

The following notes are designed to help you clear the fault yourself:

Problem	Possible cause	Solution
System does not function	AC adapter not seated properly	Check that adapter is firmly seated
	System functions incorrectly	Remove the adapter from the mains for at least 30 seconds (network reset)
T-ISDN LED flashes continuously	Cable malfunction	Check that connecting cable is seated correctly and not damaged
	No ISDN	Contact your network provider
	NTBA defective	Contact your network provider
CAPI conflict	Another CAPI driver is already installed	Uninstall the other CAPI driver
Device not found	Cable malfunction	Check that connecting cable is seated correctly and not damaged
	Problems with AMD processor under Win 98 SE	Install bugfix for AMD processors ^{*1}
	Problems with Via chipset	Install bugfix for Via chipset USB driver ^{*2}
All LEDs flash	FlashLoad failed	Repeat FlashLoad

^{*1} Download from: <http://support.microsoft.com/support/kb/articles/Q240/0/75.asp>

^{*2} Download from: http://www.via.com.tw/drivers/index_new2.htm

Appendix

Problem	Possible cause	Solution
USB cable is too short		Use an active USB extension cable (max. 5 x 5 m permissible)

If the problem persists, our Hotline is there to assist you. You will find the telephone number below in the chapter entitled "Customer Service."

Customer Service

If you experience technical problems with your communications system, call our T-Service hotline number 0180 51990 (you will be charged for your call). Experienced technicians can also advise you on the operation of your system. Please have the serial number of the communications system ready when you call. You will find this number on the base of the housing.

If you suspect that your ISDN connection is faulty, please contact your network provider's Customer Service department. Deutsche Telekom's freephone T-Service number is 0800 330 2000.

Glossary

3-party conference

A call with one internal and two external subscribers.

AOCD

Advice of charge during an outgoing call.

AOCE

Advice of charge at the end of an outgoing call.

B-channel

This is the “bearer” channel of an ISDN line, used for voice and data traffic, and it has a transmission rate of 64 kbit/s.

Basic ISDN connection

An ISDN connection with two user channels (B-channels) and one control channel (D-channel). The two user channels can be used independently of each other to access all ISDN services. For example, you can make a call and send a fax simultaneously.

Call assignment

Every MSN is assigned to the internal analogue terminals (11 - 14) which are to signal calls for the respective MSN.

Call forwarding

Call forwarding in the exchange means that you can always be contacted under your own MSN, irrespective of where you are. From your telephone you enter the desired destination number: every subsequent call to your telephone is then automatically forwarded to this number. There are three types of call forwarding: immediate, on busy and after a specified time. Calls can be forwarded world-wide to all telephone and mobile radio connections.

For call forwarding in the communications system, you specify destinations for incoming calls to each of the connected terminals. If the destination is an external one, both B-channels are busy for the duration of the forwarding, i.e. the connection is busy, and no further external calls are possible. Charges incurred for the forwarded call are billed to the internal line from which it was forwarded.

Call pickup

You can pick up an external call at your telephone when another telephone signals the call.

Call through

You can specify an MSN that is to react to a call by making the second B-channel of your ISDN connection available for relaying that call.

Call waiting

A tone during a conversation which signals that another subscriber is calling you.

Call-waiting protection

Activate call-waiting protection if you do not want to be disturbed by other subscribers calling during a conversation.

CAPI

CAPI stands for "Common ISDN Application Programming Interface." This is a programming interface enabling Windows programs to utilise the functions of ISDN devices on a computer.

CAPI port driver

A Windows driver that emulates a serial interface with connected modem. This enables programs expecting a conventional modem to utilise ISDN.

CCBS (Completion of Calls to Busy Subscriber)

This is an ISDN feature that enables a caller to program an automatic callback when the called number is busy. The callback is triggered as soon as the busy subscriber has replaced the handset.

CCNR (Completion of Calls on No Reply)

This is an ISDN feature, similar to CCBS, that enables a caller to program an automatic callback when the called number does not reply. The callback is triggered as soon as the called subscriber has made a call and replaced the handset.

CLIP (Calling Line Identification Presentation)

This is an ISDN feature transmitting the caller's number to the called subscriber, where it appears on his display.

CLIR (Calling line identification restriction)

If this service has been ordered from Deutsche Telekom, you can restrict the display of your MSN at the called subscriber.

Communications system

Communications systems are private branch exchanges (e.g. the Eumex 504PC SE). For the purpose of external communication, they are connected to the public network. Communications systems are not restricted to telephony, but also offer complete office communications services (voice, text, data and video transfer).

Configuration mode

In the configuration mode you can set certain parameters and edit preset values for your communications system.

Appendix

D-channel

This is the control channel of an ISDN connection, and it has a transmission rate of 16 kbit/s (S_0). It is used for the transmission of control information, service indicator, MSN, tariff information, etc.

Dial-up network

Your computer can use the Microsoft Windows dial-up network facility to connect to an Internet service provider via a modem.

Doorline

Range of Deutsche Telekom doorstation equipment and adapters for the connection of other manufacturers' doorstation equipment to Deutsche Telekom communications systems.

DTMF

Stands for "dual tone multi-frequency," also known as voice frequency dialling. The dialling signals and control functions are transmitted in the form of tones at various frequencies.

DTMF post-dialling

DTMF post-dialling is only possible during an external call when, for example, an automatic announcement prompts you to post-dial digits and symbols (1 - 0, * and #), during fax polling or other applications, e.g. T-NetBox.

ECT (Explicit Call Transfer)

This is an ISDN feature. If you use ECT to forward an external call to an external subscriber, the calls are connected in the telephone exchange and (in the case of directly-dialled calls), billed to your account. You have no control over the duration of the forwarded call.

E-mail

E-mail is a written message transmitted via an on-line service or the Internet to another subscriber's e-mail address. The e-mail protocols used in the Internet enable the attachment of data (pictures, programs, etc.) to the e-mail.

Enquiry

You can hold a call and make an enquiry call to another internal or external subscriber, then return to your first call.

Exchange

A node in the public telecommunications network.

External line access

External line access levels regulate access to an external line. You can, for example, specify which subscribers are not allowed to make long-distance calls.

External line seizure

Depending on the configuration, an external line can be seized automatically or by dialling 0. This means that when you want to make an external call and you lift the handset, you hear an external dialling tone either immediately or after dialling 0.

IAE/UAE

This is a unit consisting of the standardised socket and plug for connecting ISDN devices in Deutsche Telekom's ISDN.

ISDN

ISDN stands for "Integrated Services Digital Network."

ISDN socket

The standardised socket for connecting ISDN devices in Deutsche Telekom's ISDN.

LED

Light emitting diode: an electronic component for visual signalling.

MCID (Malicious Call Identification)

An ISDN feature enabling malicious callers to be identified in the telephone exchange.

ML PPP

Multilink point-to-point protocol, which bundles two B-channels to achieve a higher transfer rate.

MSN

Multiple subscriber number: an external ISDN telephone number. Up to 10 multiple subscriber numbers can be assigned to a multi-terminal basic ISDN connection. These numbers enable the connected devices to be addressed (i.e. called, faxed, etc.) individually.

Multi-terminal connection

You can operate up to three terminals without power supplies and five additional terminals with their own power supplies on a multi-terminal connection. You can install a total of 12 ISDN ports, using the free ports to plug in your ISDN terminals at different locations.

MWI

Message waiting indication. There is a voice or fax message waiting in your T-NetBox.

NTBA

Network Termination Basic Access. This is the network terminator, a small box that converts a 2-wire line to an internal 4-wire line to the S0 port.

Personal identification number (PIN)

You need the PIN to start the configuration mode. The default setting on delivery is 0000. We strongly recommend you to change this PIN and keep the new one in a safe, secret place, in order to prevent unauthorised persons from gaining access to the configuration mode.

PPP

This stands for “point-to-point protocol,” a network protocol used for connecting to the Internet via a modem.

Pulse dialling

A dialling procedure in which the dialling signals are transmitted in the form of electrical impulses, as used by telephones with rotary dialling disks, for instance.

Reset communications system

You can deactivate or delete all activated features and activate the default (factory) settings instead.

SMS

Short Message Service, i.e. short messages transmitted to and from mobile telephones and fixed-line networks.

S₀ port

The international standardised ISDN interface for connecting communications systems and/or up to eight ISDN devices.

Speed dialling

You can store up to 100 numbers and dial them using a two-digit speed-dialling code.

TAE

Socket for connecting analogue devices.

TAPI

Stands for “Telephony Application Programming Interface,” and is a programming interface in Microsoft Windows used by Windows programs to control telephony functions, e.g. dialling wizards.

TCP/IP

Stands for “Transmission Control Protocol/Internet Protocol,” and is a transmission protocol for networks also used for connecting to the Internet.

T-NetBox

Digital answerphone with a fax buffer in Deutsche Telekom’s telephone network. The Eumex 504PC SE signals messages waiting in the T-NetBox.

Appendix

Toggle

Switching back and forth between two calls. You can accept incoming calls even though you are already making a call, or have an enquiry call with other participants involved in the call.

USB

Stands for "Universal Serial Bus," a fast serial interface with a transfer rate of up to 12 Mbit/s. A (theoretical) maximum of 127 devices can be operated on a single USB interface, and the devices can be plugged in or unplugged while the computer is still running.

Vanity

Instead of using digits, the Vanity caller dials a number using characters on an alphanumeric keypad. Vanity telephony makes it much easier to remember telephone numbers, because names or expressions are used instead of those numbers. You press the digits corresponding to the characters printed on the keys, e.g. for A, B or C you press 2.

You can, for example, contact Deutsche Telekom's Service and Ordering Hotline under the easy-to-remember number 0800 - TELEKOM, which corresponds to the number 0800 - 8353566 but is much more easily noted.

Declaration of Conformity

CE sign

This device meets the requirements laid down in the following EC Directive: 1999/5/EC Directive on Radio Equipment and Telecommunications Terminal Equipment and the mutual acknowledgement of their conformity. The CE symbol on the equipment is proof of its conformity with the aforementioned Directive.

The Declaration of Conformity can be viewed at the following address:
Deutsche Telekom AG
Geschäftsbereich Endgeräte
CE-Testlab Steinfurt
Sonnenschein 38
D-48565 Steinfurt

Returning Old Communications Systems

You can return decommissioned communications systems that have been purchased or leased from Deutsche Telekom free of charge to any T-Punkt, where they will be professionally dismantled and recycled.

Returning Your Old CD-ROM

When you no longer require it, you can return your CD-ROM free of charge to any T-Punkt, where it will be recycled.

Warranty

If you have purchased the product directly from Deutsche Telekom, e.g. in a T-Punkt store or by T-Versand, the following warranty applies:

Deutsche Telekom AG provides a 2-year warranty on material and workmanship of the telecommunications device from the time of purchase.

In the event of a defect the purchaser's rights shall in the first place be limited to remedial measures. Remedial measures constitute either repair or supply of a replacement product. Returned equipment or parts thereof become the property of Deutsche Telekom AG.

If repairs are unsuccessful, the purchaser may either request a reduction in the pur-

chase price or rescind the contract and, insofar as Deutsche Telekom is accountable for the defects, demand compensation.

The purchaser shall report any ascertained defects to Deutsche Telekom without delay. Proof of warranty must be provided in the form of a valid purchase receipt or invoice.

The warranty shall become null and void if the equipment has been tampered with by the purchaser or an unauthorised third party. Damage caused by improper handling, operation or storage or due to force majeure or other external influences is not included under the warranty. The same applies to the use of consumables, e.g. printer cartridges and rechargeable batteries.

No charge will be made if defects covered by this warranty are repaired by a Deutsche Telekom AG service point. Freight and shipping charges for the least expensive form of return within the Federal Republic of Germany will be paid by Deutsche Telekom AG.

If you have purchased the product from a specialist retailer or store, the following warranty applies:

All claims under warranty must be addressed to the dealer from whom you purchased the equipment.

The dealer provides a 2-year warranty on material and workmanship of the telecommunications device from the time of purchase.

In the event of a defect the purchaser's rights shall in the first place be limited to remedial measures. Remedial measures constitute either repair or supply of a replacement product. Returned equipment or parts thereof become the property of the dealer.

If repairs are unsuccessful, the purchaser may either request a reduction in the purchase price or rescind the contract and, insofar as the dealer is accountable for the defects, demand compensation.

The purchaser shall report any ascertained defects to the dealer without delay. Proof of warranty must be provided in the form of a valid purchase receipt or invoice.

The warranty shall become null and void if the equipment has been tampered with by the purchaser or an unauthorised third party. Damage caused by improper handling, operation or storage or due to force majeure or other external influences is not included under the warranty. The same applies to the use of consumables, e.g. printer cartridges and rechargeable batteries.

Disclaimer

Although due care and attention has been given to this translation, it should not be considered a legal document and the original language document takes precedence over this translation in any dispute over interpretation.

Index of Key Words

- 3-party conference.....26
- A
 - Access data, Internet.....77
 - Additional features (Menu).....78
 - Address filter, Internet75
 - Anonymous calls.....52
 - Answerphone call.....27
 - Audio signals.....97
 - Automatic callback on
 - busy (CCBS)27
 - Automatic callback on
 - no reply (CCNR).....28
 - Automatic external line
 - seizure.....45
 - Automatic and manual
 - external line seizure.....18
- B
 - Basic settings17
 - Blacklist.....35, 76
- C
 - Call assignment.....34, 43
 - Call assignment (Menu).....71
 - Callback.....27, 28
 - Call data38
 - Call data recording, activating/
 - deactivating.....57
 - Call data records.....81
 - Call forwarding56, 73
 - Call forwarding, activating.....30
 - Call forwarding, deactivating.....31
 - Call forwarding in a
 - communications system.....58
 - Call forwarding in the exchange.....74
 - Call forwarding in the system.....73
 - Call forwarding (Menu)72
 - Call list95
 - Call pick-up27
 - Call through.....36, 78
 - Call transfer23, 24
 - Call transfer (ECT),
 - activating/deactivating.....58
 - Call waiting.....32
 - Call-waiting protection33
 - CAPI Control86
 - CCBS27
 - CCNR28
 - Charge account.....38
 - Charge limit.....38
 - Charge limit, activating/
 - deactivating.....55
 - Charge limit, setting.....55
 - Charge per unit of time54
 - Charges80
 - Charges – Call data records
 - (Menu)81
 - Charges - Summary (Menu)80
 - Communications software63
 - Configuration mode40
 - Configuration, remote62
 - Configuring the Eumex 504PC SE...68
 - Conformity, declaration of.....107
 - Connecting10
- D
 - Day/night line switchover34, 71
 - Default settings on delivery17
 - Default system settings, restoring61
 - Device type.....47
 - Dialling wizard software93
 - DTMF post-dialling.....29
- E
 - ECT.....58
 - Emergency numbers.....38, 49, 78
 - Enquiry.....22, 25
 - External line access17, 48
 - External line access and
 - speed-dialling numbers.....37
 - External line access levels.....48
 - External line seizure.....78
- F
 - Fax, blocking.....75
 - FlashLoad.....88

Appendix

H		R	
HomeNet Control	84	Recycling	107
I		Release interface (CAPI)	87
Installation	9	Remote configuration	62
Internal lines (Menu)	70	Resetting the system	61
Internal special dialling tone	39	Restrict telephone number	52
Internet address filter	75	Restrict telephone number, cancel ..	52
Internet, connecting/ disconnecting	83	Ringer cadences	97
Internet access data	77	S	
Invoking a program from the Windows taskbar	85	Safety precautions	4
ISDN telephone numbers (Menu)	69	Saving/loading (Menu)	82
K		Security – filter settings (Menu)	75
Keypad	60	Settings, basic	17
M		Settings, default	17
Malicious call identification (MCID)	29	Signalling procedures	60
Manual external line access	45	Special dialling tone, internal	39
Mounting location	8	Speed dialling, access to	51
N		Speed dialling, making calls with	21
Network settings (Menu)	77	Speed dialling (Menu)	74
Number, always transmit	53	Speed-dialling memory locations	75
Number busy	78	Speed-dialling memory locations, deleting all/individual	50
Number, never transmit	53	Speed-dialling numbers, storing	50
Number restriction	52	SMS in a fixed-line network	70
Number restriction: cancel	53	Software, about the	65
Numbers, storing	42, 69	Software modules, installation of	66
P		Storing telephone numbers	42, 69
PC software	63	Surge protection	9
Personal identity number, secret	17, 41, 61	System prerequisites	64
Picking up an Answerphone call	27	System software, updating	88
PIN	17, 41, 61	T	
Post-dialling, DTMF	4	Talking with two subscribers alternately (toggling)	25
Power failure	4	Teledat RVS-COM	91
Program, invoking from the Windows taskbar	85	Telephone numbers (MSNs), storing	42, 69
Precautions, safety	4	T-NetBox, calling	29
		T-NetBox signalling, activating/deactivating	59, 78
		Toggling	25
		Tools	9
		Transferring calls	23, 24
		Transmission of number	53

U
Updating the system software88

V
Vanity numbers.....21

W
Wall mounting.....9
Warranty107
Windows taskbar, invoking a
program from the85

Important telephone numbers

In case of faults:

Sales enquiries:

Please enter the telephone number
when handing over the device.

Published by:
Deutsche Telekom AG

Right to changes reserved.

As of: 16.08.2002