

Manuelle Installation des Druckerports unter Windows XP

Systemsteuerung

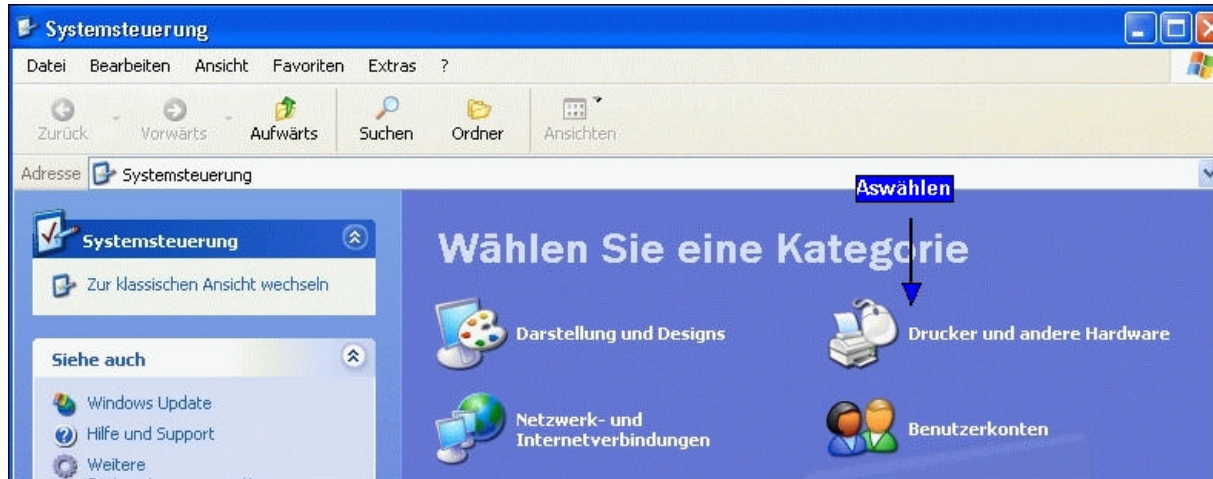


Abbildung 1 Systemsteuerung



Abbildung 2 Drucker und andere Hardware



Abbildung 3 Druckerinstallations-Assistent

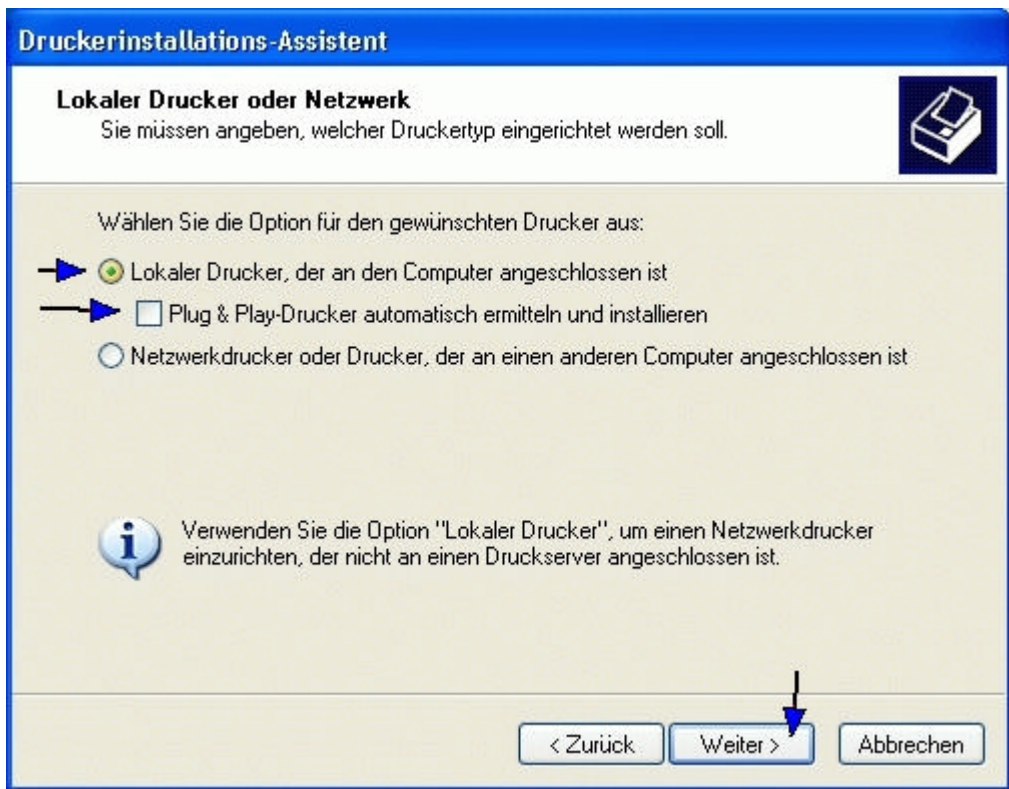


Abbildung 4 DruckerTyp

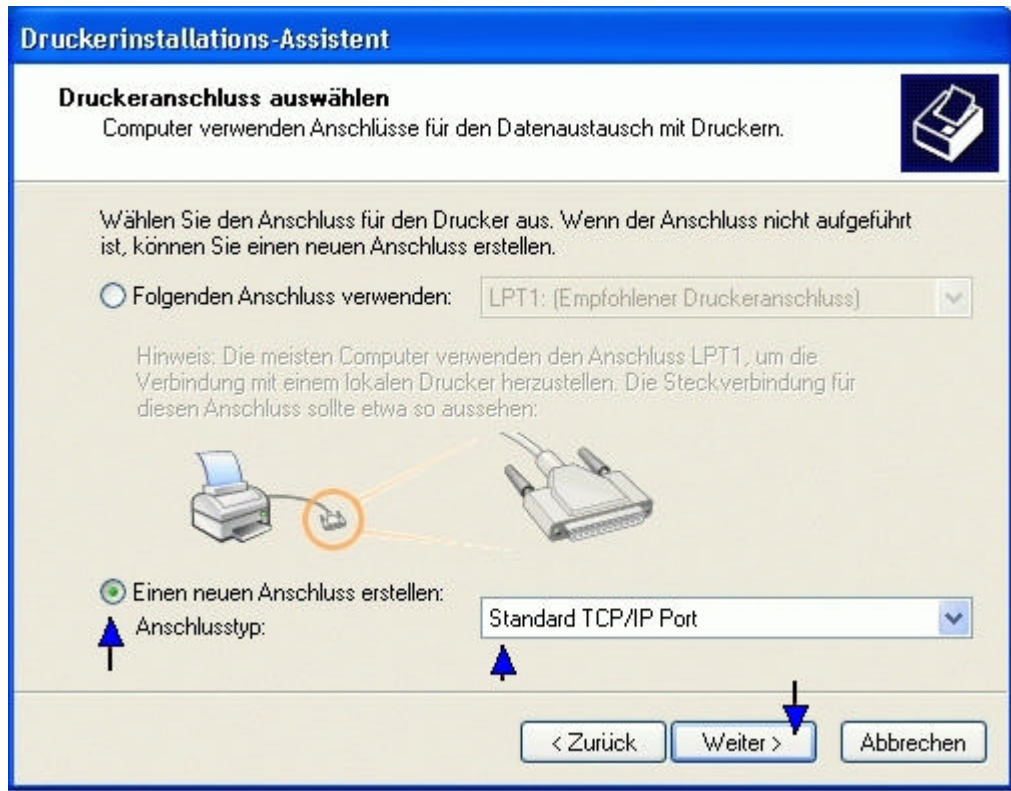


Abbildung 5 Druckeranschluss

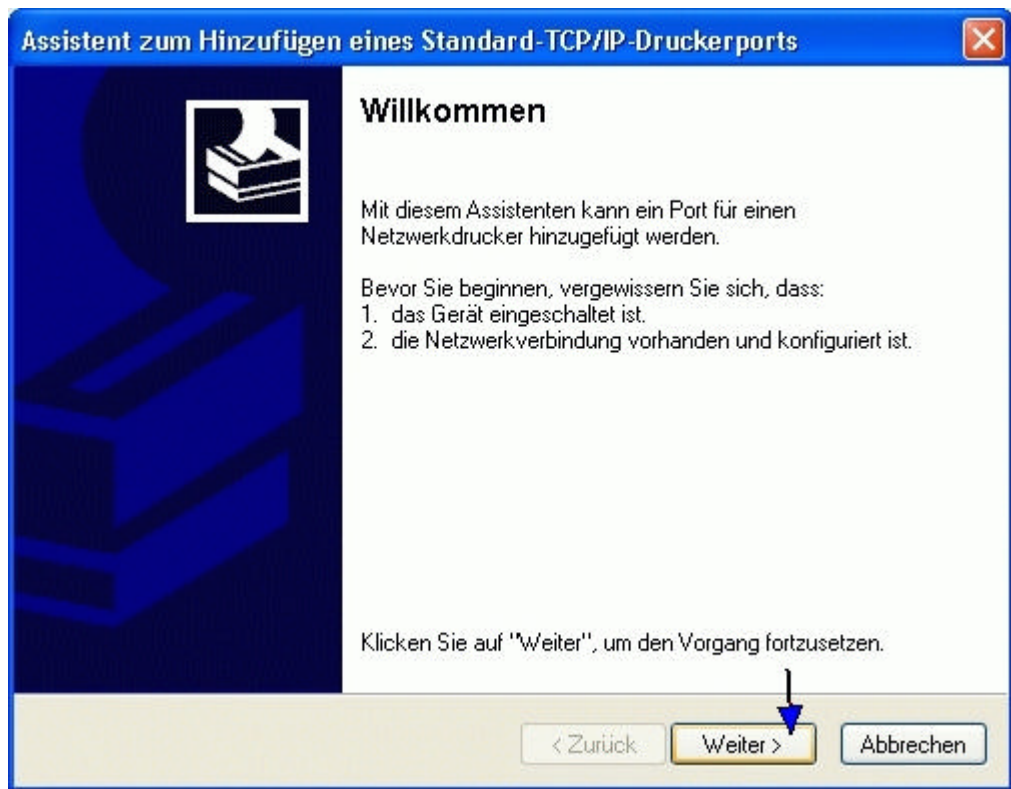


Abbildung 6 Hinzufügen eines Standard-TCP/IP-Dru ...

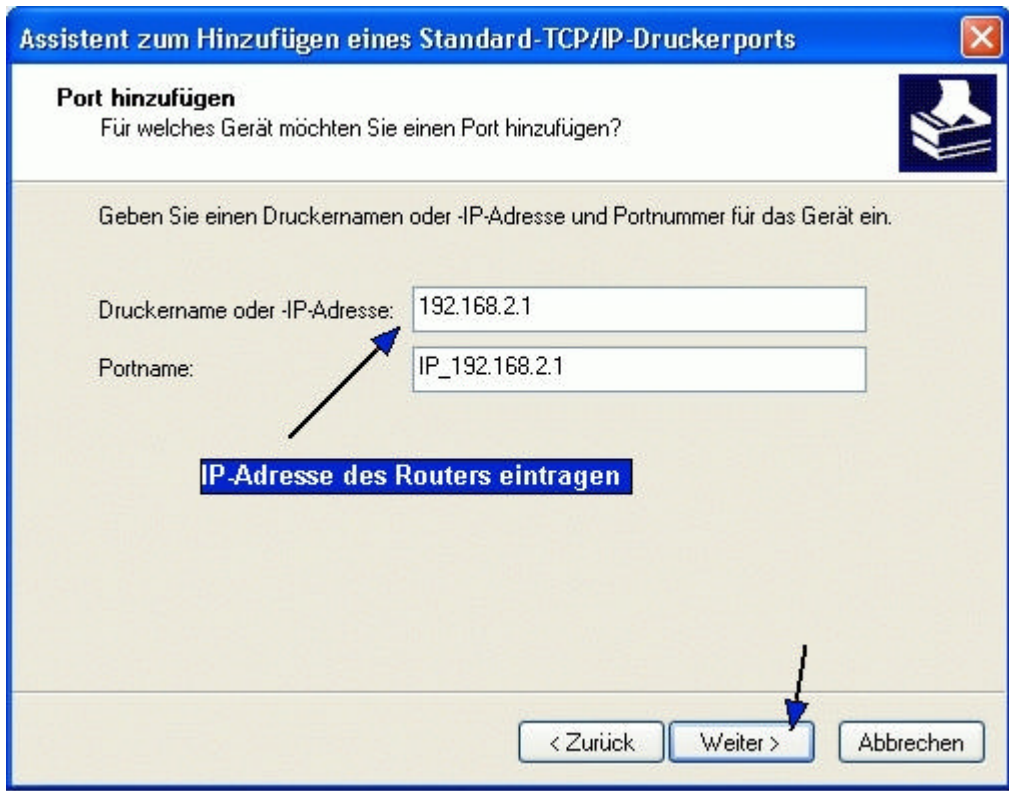


Abbildung 7 IP-Adresse

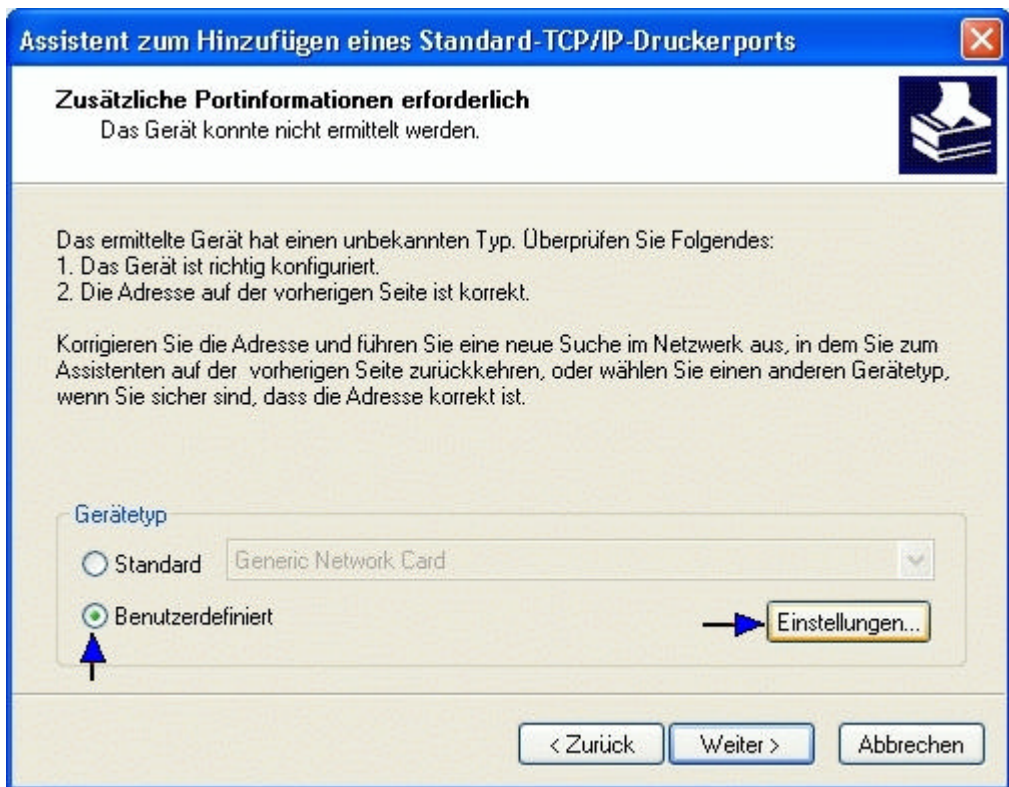


Abbildung 8 Zusätzliche Portinformationen

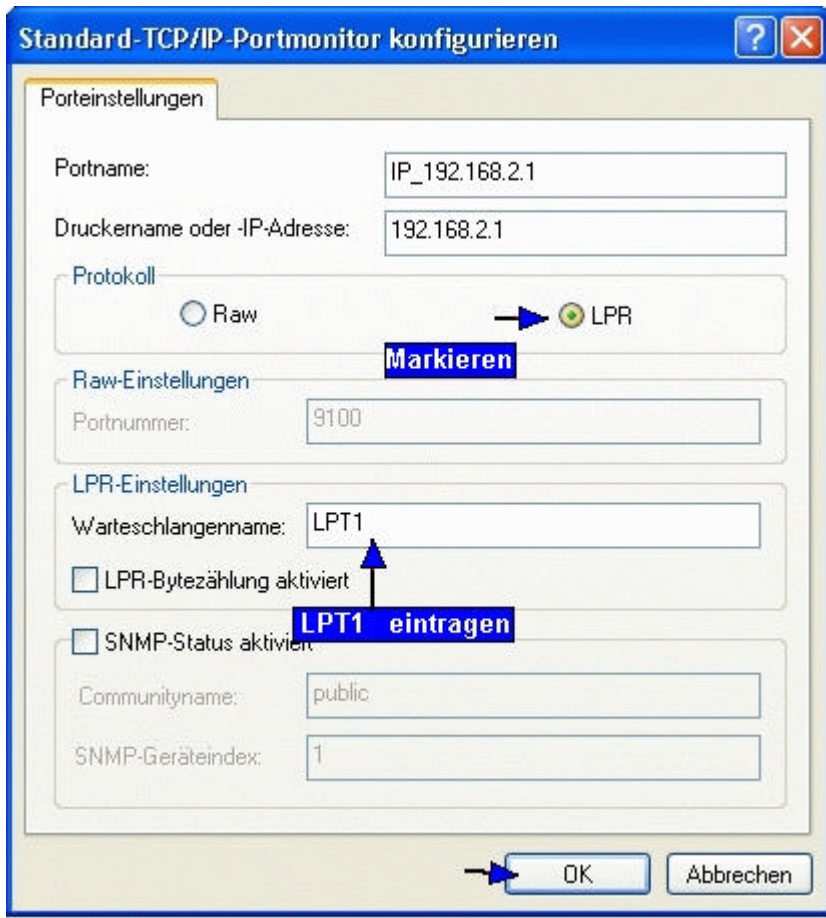


Abbildung 9 TCP/IP-Port konfigurieren

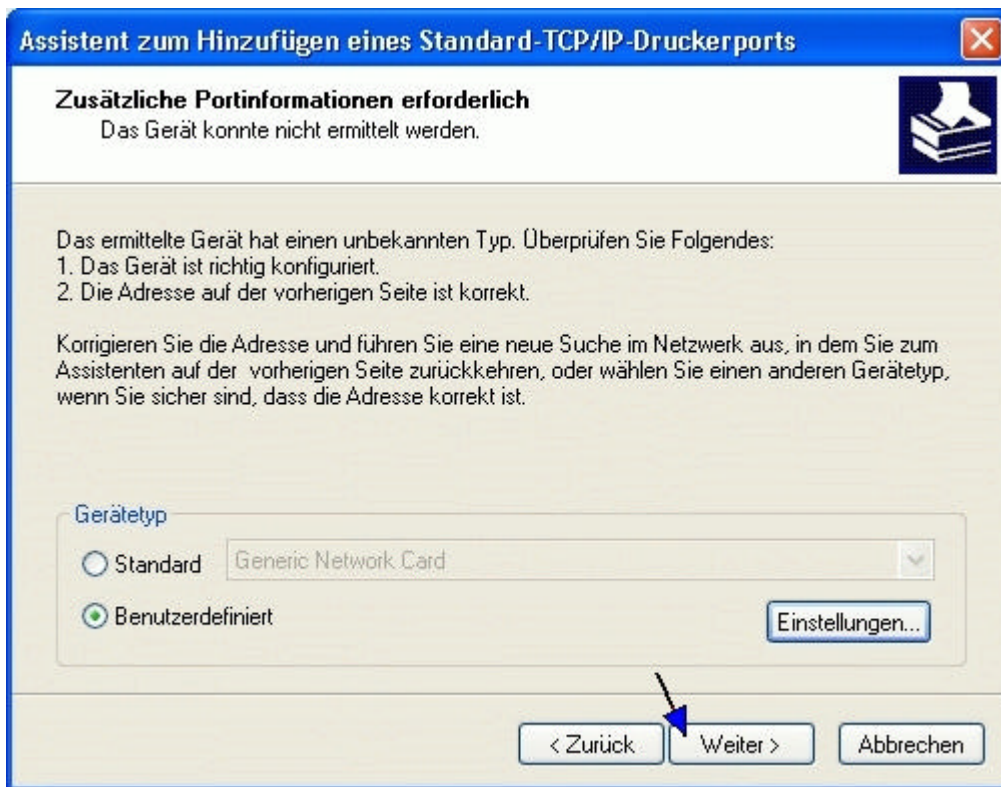


Abbildung 10 Zusätzliche Portinformationen (abgeschlossen)



Abbildung 11 Fertigstellen

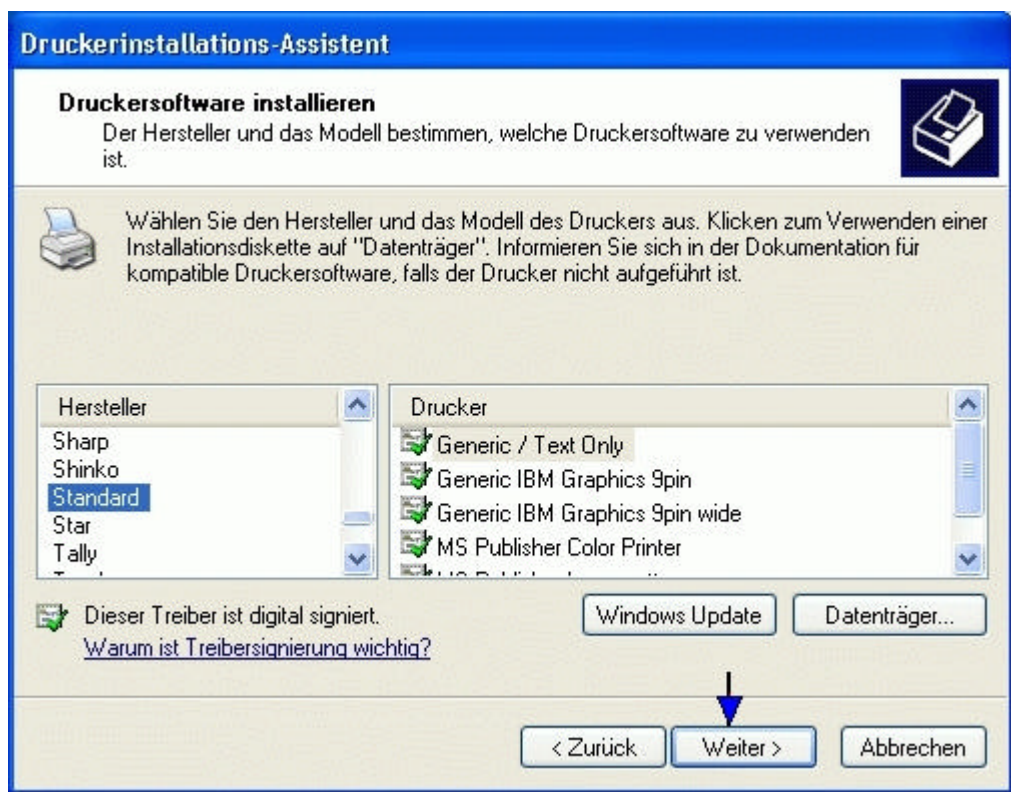


Abbildung 12 Druckerauswahl

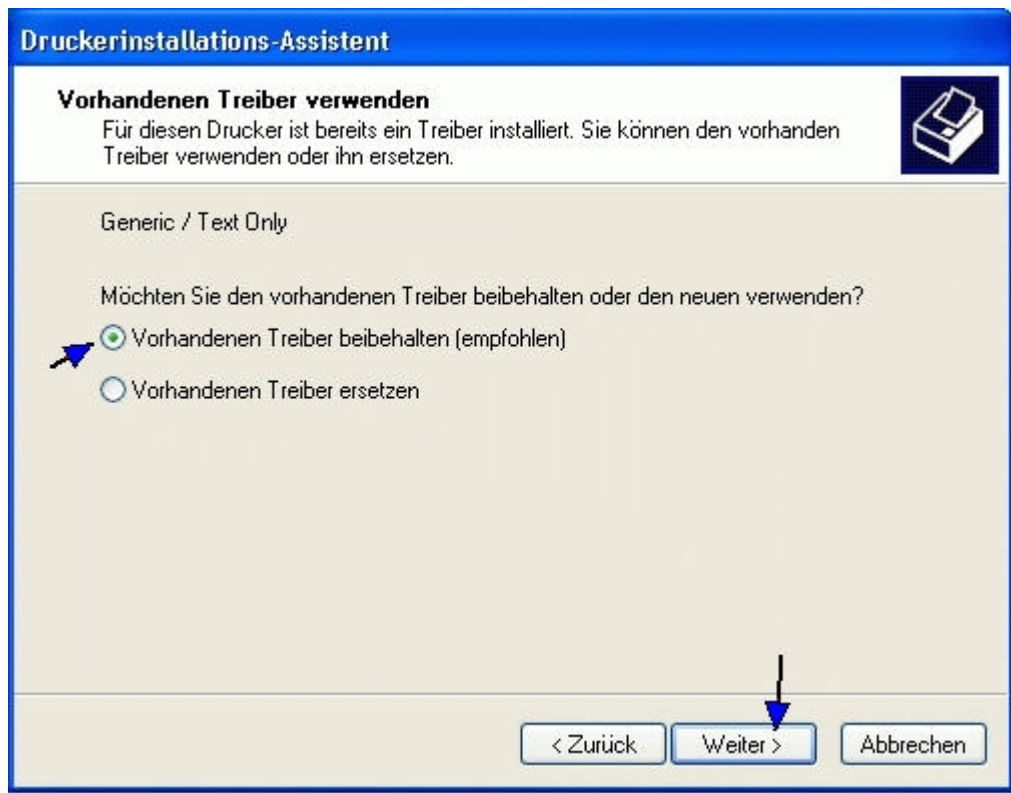


Abbildung 13 Treiberauswahl

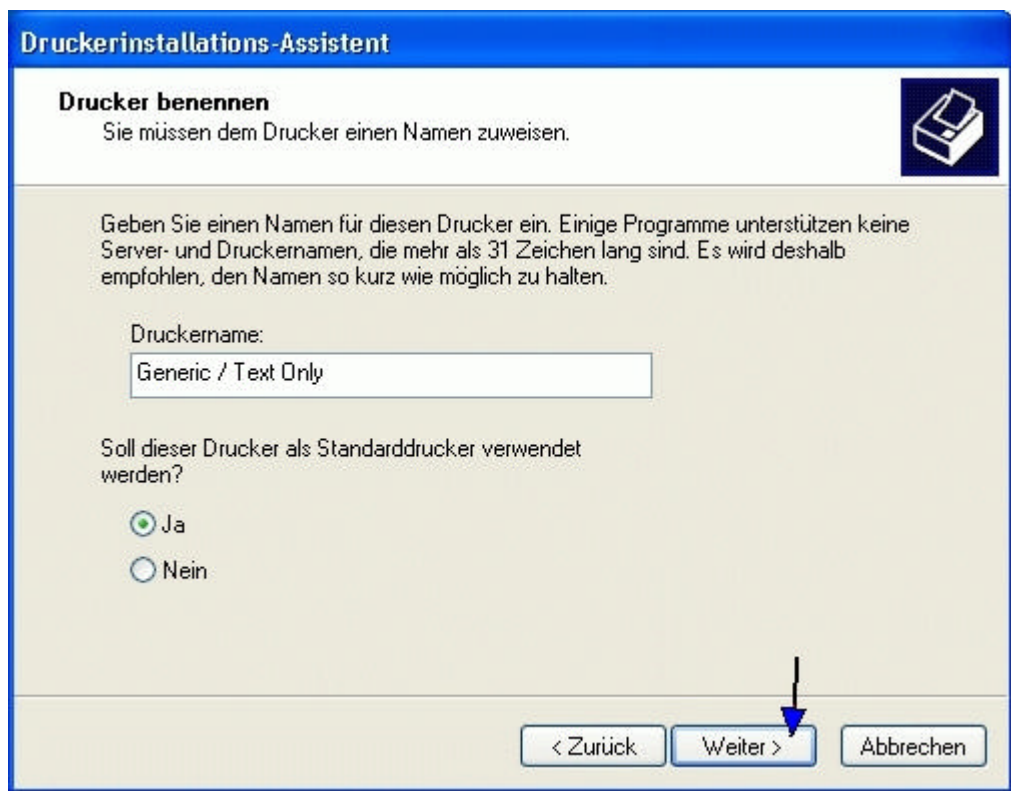


Abbildung 14 Drucker benennen

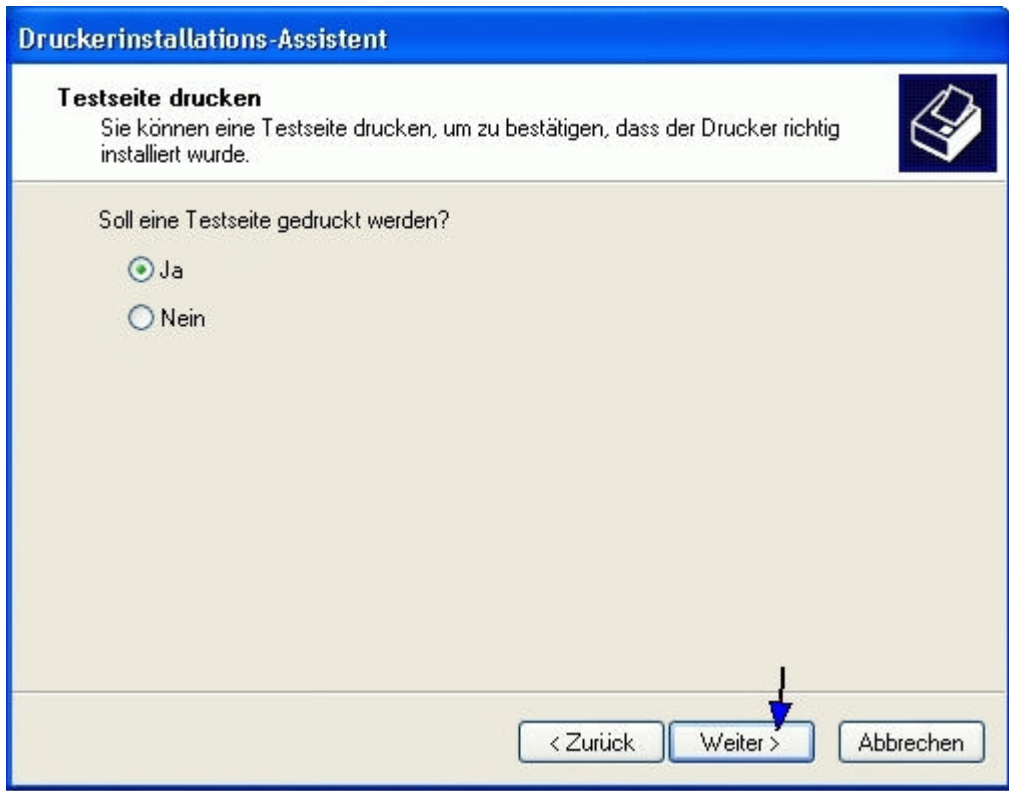


Abbildung 15 Testseite

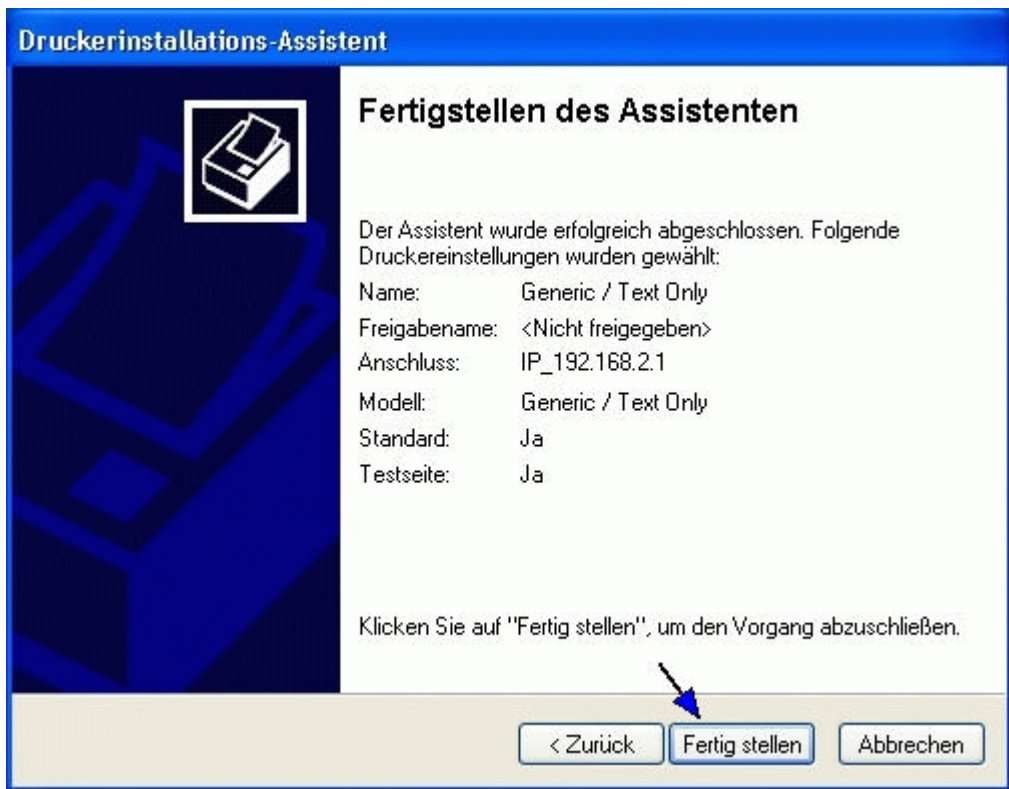


Abbildung 16 Fertigstellen

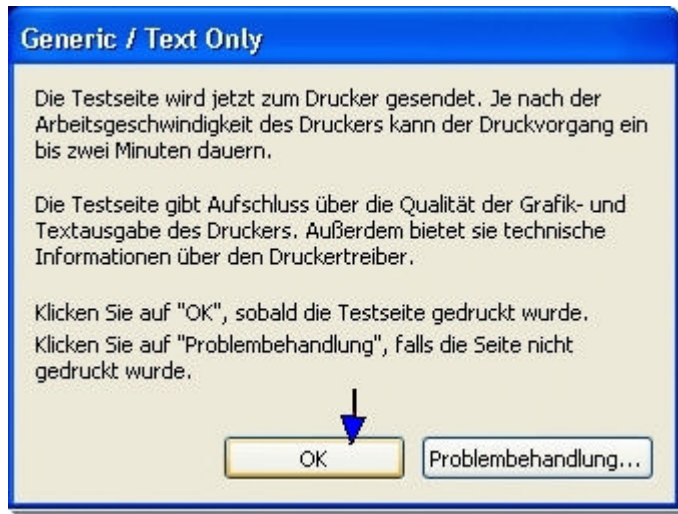


Abbildung 17 Generic / Text Only